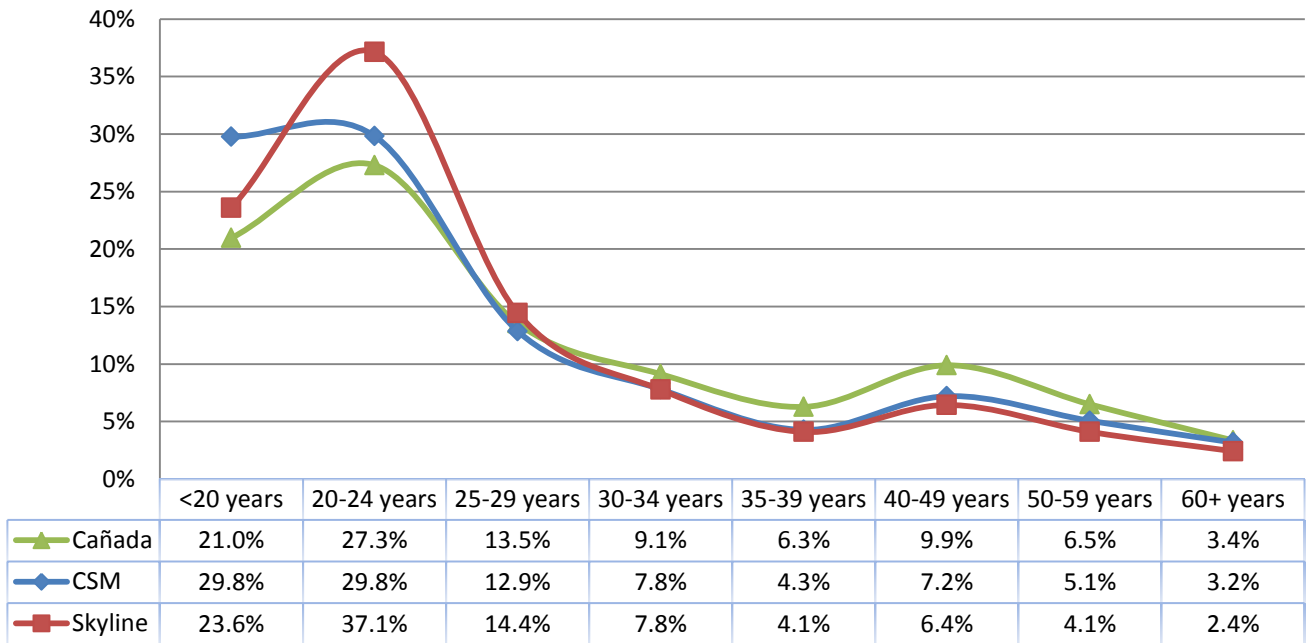
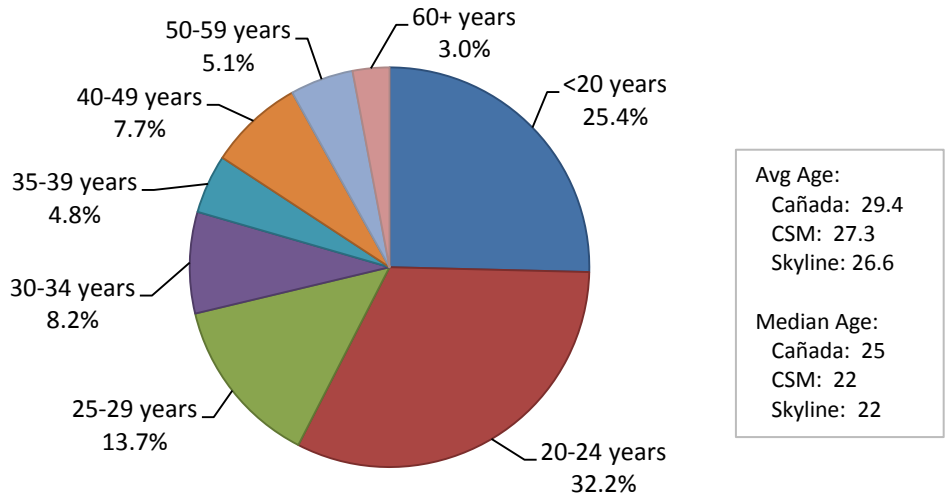


**Fall 2012 Student Age Distribution**



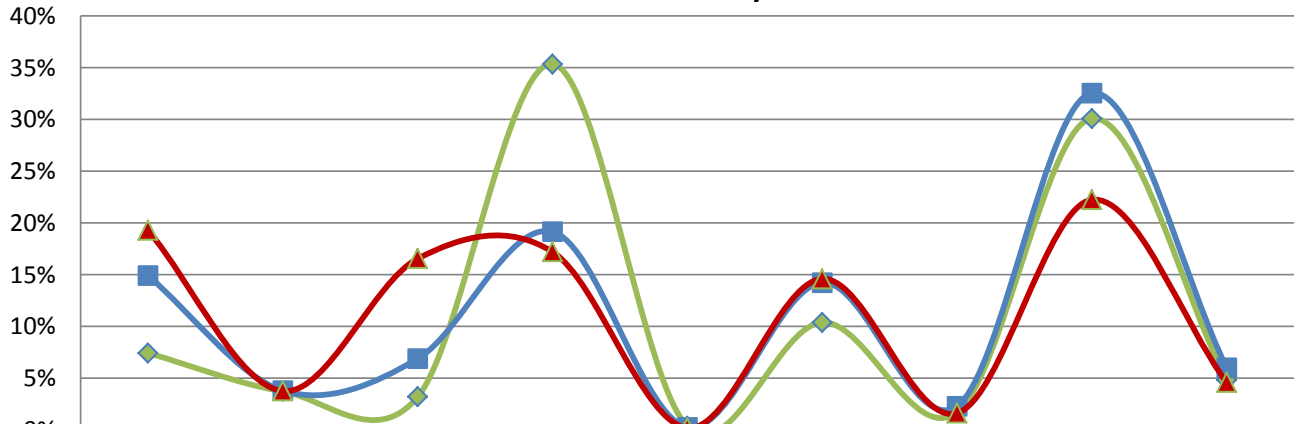
**District Student Age Distribution - Fall 2012**



**3 year Trend**

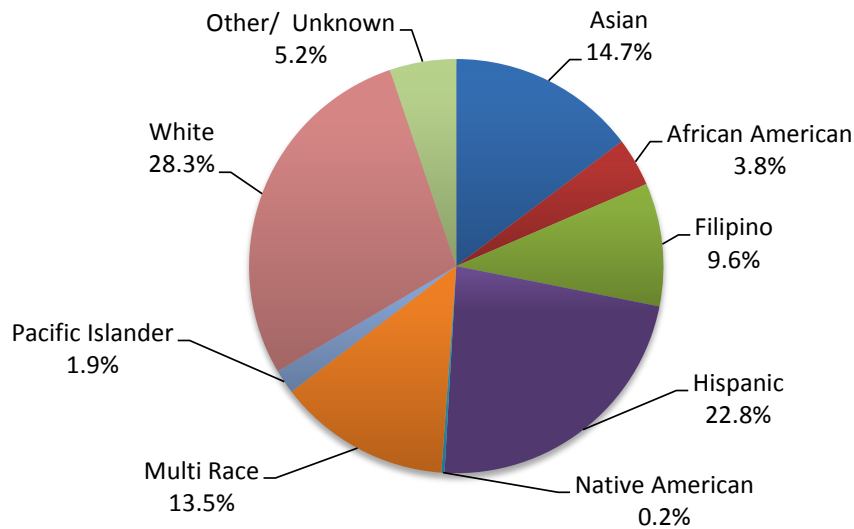
Age	Cañada			CSM			Skyline			District		
	Fa 2010	Fa 2011	Fa 2012	Fa 2010	Fa 2011	Fa 2012	Fa 2010	Fa 2011	Fa 2012	Fa 2010	Fa 2011	Fa 2012
<20 years	1,509	1,460	1,466	3,022	3,064	2,960	2,514	2,411	2,384	7,045	6,935	6,810
20-24 years	1,851	1,841	1,908	2,914	2,994	2,966	3,648	3,741	3,752	8,413	8,576	8,626
25-29 years	1,056	1,049	946	1,402	1,354	1,279	1,429	1,480	1,458	3,887	3,883	3,683
30-34 years	650	639	638	823	837	776	713	748	785	2,186	2,224	2,199
35-39 years	496	478	439	561	511	425	484	443	414	1,541	1,432	1,278
40-49 years	826	790	692	887	842	717	683	706	651	2,396	2,338	2,060
50-59 years	515	463	454	622	597	504	461	455	415	1,598	1,515	1,373
60+ years	319	272	235	354	337	316	246	252	245	919	861	796

**Fall 2012 Student Ethnicity**



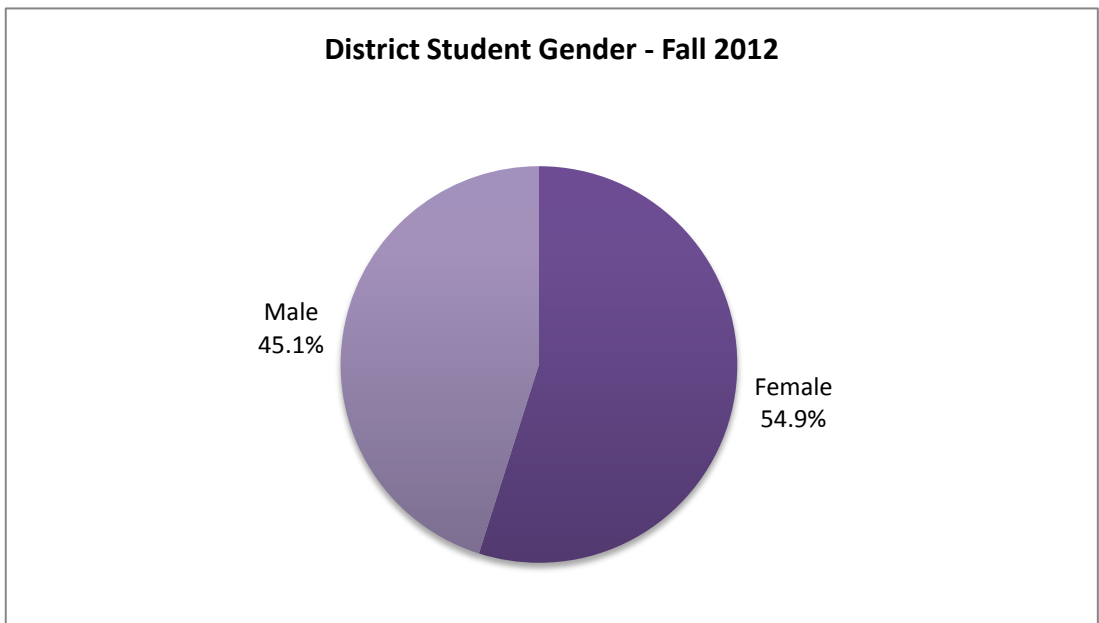
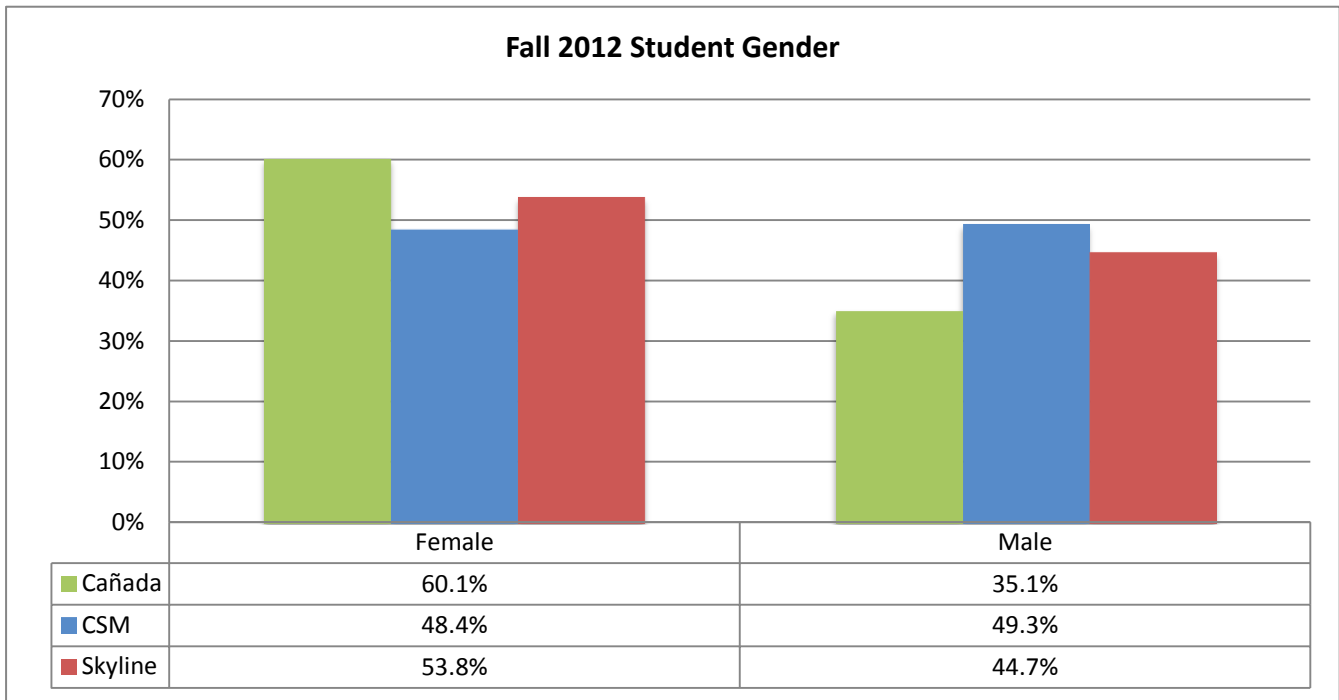
	Asian	African American	Filipino	Hispanic	Native American	Multi Race	Pacific Islander	White	Other/ Unknown
Cañada	7.4%	3.7%	3.2%	35.4%	0.3%	10.4%	1.7%	30.1%	4.8%
CSM	14.9%	3.8%	6.9%	19.1%	0.2%	14.2%	2.3%	32.5%	6.0%
Skyline	19.3%	3.8%	16.5%	17.2%	0.2%	14.6%	1.6%	22.2%	4.6%

**District Student Ethnicity - Fall 2012**



**3 year Trend**

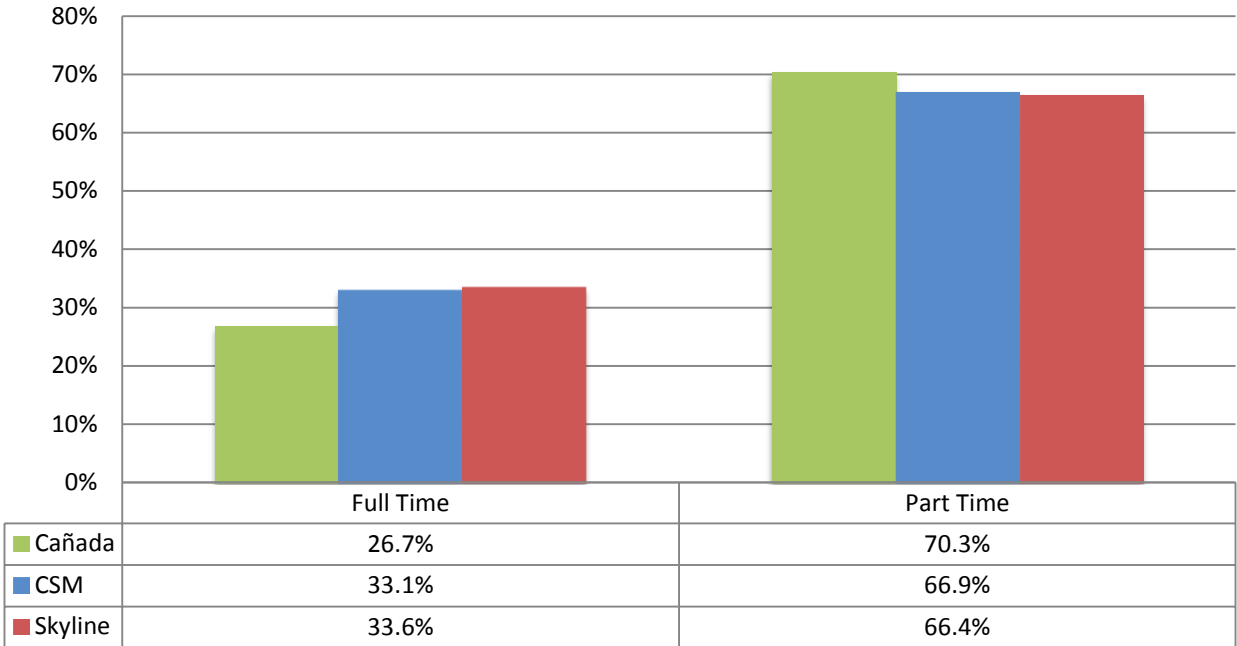
Ethnicity	Cañada			CSM			Skyline			District		
	Fa 2010	Fa 2011	Fa 2012	10588	Fa 2011	Fa 2012	Fa 2010	Fa 2011	Fa 2012	Fa 2010	Fa 2011	Fa 2012
Asian	533	478	519	1,708	1,625	1,482	2,227	2,071	1,949	4,468	4,174	3,950
African American	297	285	260	389	373	377	386	399	379	1,072	1,057	1,016
Filipino	240	241	223	764	726	684	1,745	1,787	1,672	2,749	2,754	2,579
Hispanic	2,770	2,613	2,472	2,062	2,012	1,904	1,859	1,802	1,738	6,691	6,427	6,114
Native American	26	27	24	38	31	24	22	21	19	86	79	67
Multi Race	376	600	726	792	1,188	1,415	873	1,228	1,475	2,041	3,016	3,616
Pacific Islander	117	123	119	247	231	228	183	184	163	547	538	510
White	2,309	2,231	2,104	3,622	3,627	3,236	2,134	2,163	2,247	8,065	8,021	7,587
Other/ Unknown	554	394	336	966	727	596	751	581	462	2,271	1,702	1,394



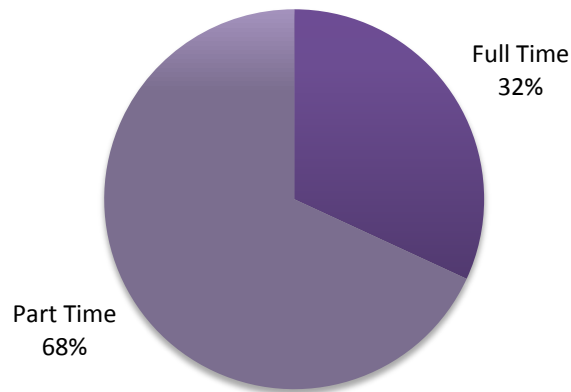
### 3 year Trend

Gender	Cañada			CSM			Skyline			District		
	Fa 2010	Fa 2011	Fa 2012	Fa 2010	Fa 2011	Fa 2012	Fa 2010	Fa 2011	Fa 2012	Fa 2010	Fa 2011	Fa 2012
Female	4,612	4,419	4,205	5,128	5,182	4,812	5,439	5,427	5,435	15,179	15,028	14,452
Male	2,467	2,452	2,456	5,200	5,110	4,901	4,556	4,633	4,516	12,223	12,195	11,873

### Fall 2012 Student Enrollement - Full time/Part Time



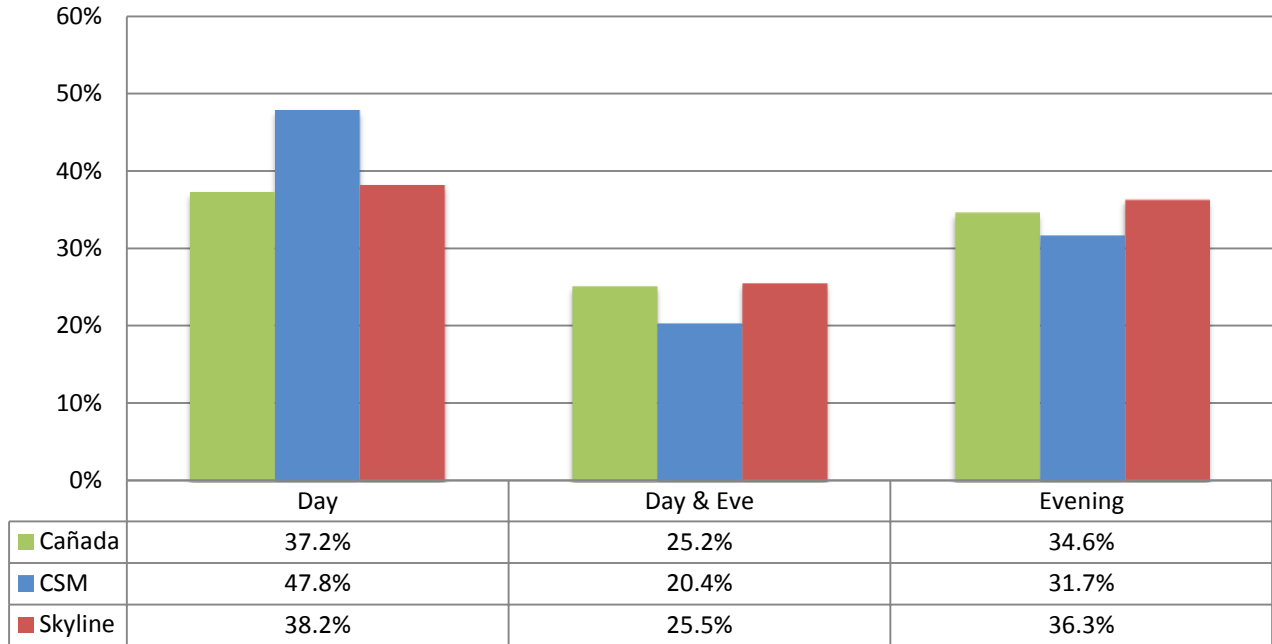
### District Student Enrollment - Fall 2012 Full Time/Part time



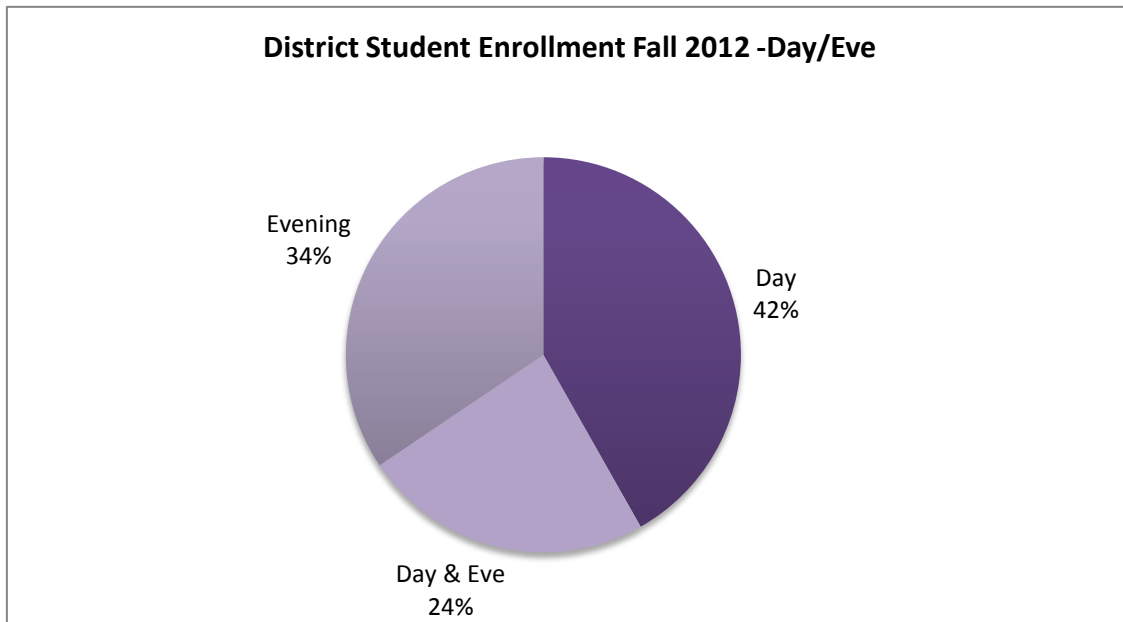
### 3 year Trend

FT/PT	Cañada			CSM			Skyline			District		
	Fa 2010	Fa 2011	Fa 2012	Fa 2010	Fa 2011	Fa 2012	Fa 2010	Fa 2011	Fa 2012	Fa 2010	Fa 2011	Fa 2012
Full Time	1,875	1,838	1,865	3,368	3,306	3,295	3,328	3,524	3,396	8,571	8,668	8,556
Part Time	5,347	5,154	4,918	7,220	7,234	6,651	6,852	6,712	6,708	19,419	19,100	18,277

**Fall 2012 Student Enrollment - Day/Eve**



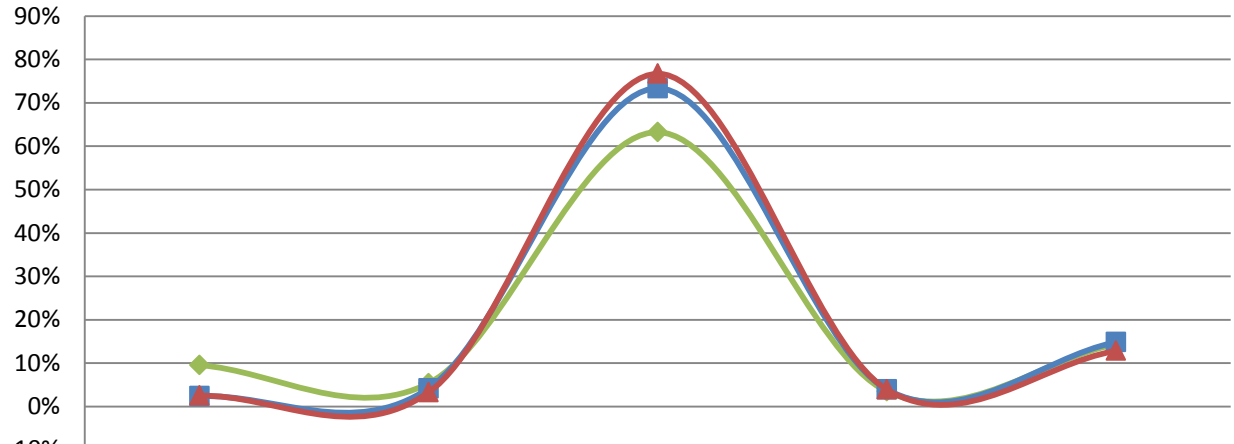
**District Student Enrollment Fall 2012 -Day/Eve**



**3 year Trend**

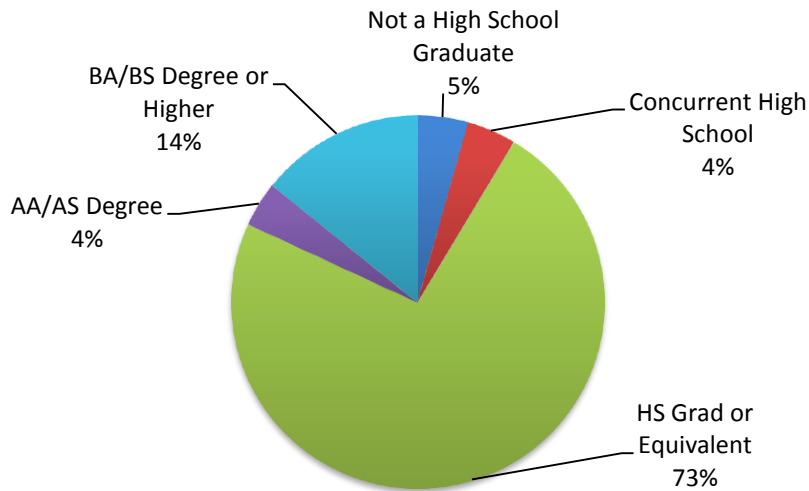
Day/Eve	Cañada			CSM			Skyline			District		
	Fa 2010	Fa 2011	Fa 2012	Fa 2010	Fa 2011	Fa 2012	Fa 2010	Fa 2011	Fa 2012	Fa 2010	Fa 2011	Fa 2012
Day	2,931	2,901	2,604	5,104	4,953	4,756	3,877	3,968	3,857	11,912	11,822	11,217
Day & Eve	1,606	1,573	1,761	2,048	2,086	2,033	2,661	2,790	2,579	6,315	6,449	6,373
Evening	2,685	2,518	2,418	3,436	3,501	3,157	3,642	3,473	3,668	9,763	9,492	9,243

### Fall 2012 Student Education Level



	Not a High School Graduate	Concurrent High School	HS Grad or Equivalent	AA/AS Degree	BA/BS Degree or Higher
Cañada	9.6%	5.4%	63.2%	3.5%	14.4%
CSM	2.4%	4.2%	73.3%	3.9%	14.9%
Skyline	2.5%	3.3%	76.7%	3.9%	12.8%

### District Student Education Level - Fall 2012



### 3 year Trend

Education Level	Cañada			CSM			Skyline			District		
	Fa 2010	Fa 2011	Fa 2012	Fa 2010	Fa 2011	Fa 2012	Fa 2010	Fa 2011	Fa 2012	Fa 2010	Fa 2011	Fa 2012
Not a High School Graduate	760	672	668	254	304	239	288	296	254	1,302	1,272	1,161
Concurrent High School	439	326	375	359	516	417	293	217	331	1,091	1,059	1,123
HS Grad or Equivalent	4,386	4,530	4,421	7,693	7,555	7,295	7,665	7,960	7,750	19,744	20,045	19,466
AA/AS Degree	299	271	244	430	381	392	461	424	396	1,190	1,076	1,032
BA/BS Degree or Higher	1,289	1,159	1,009	1,724	1,682	1,479	1,391	1,261	1,298	4,404	4,102	3,786