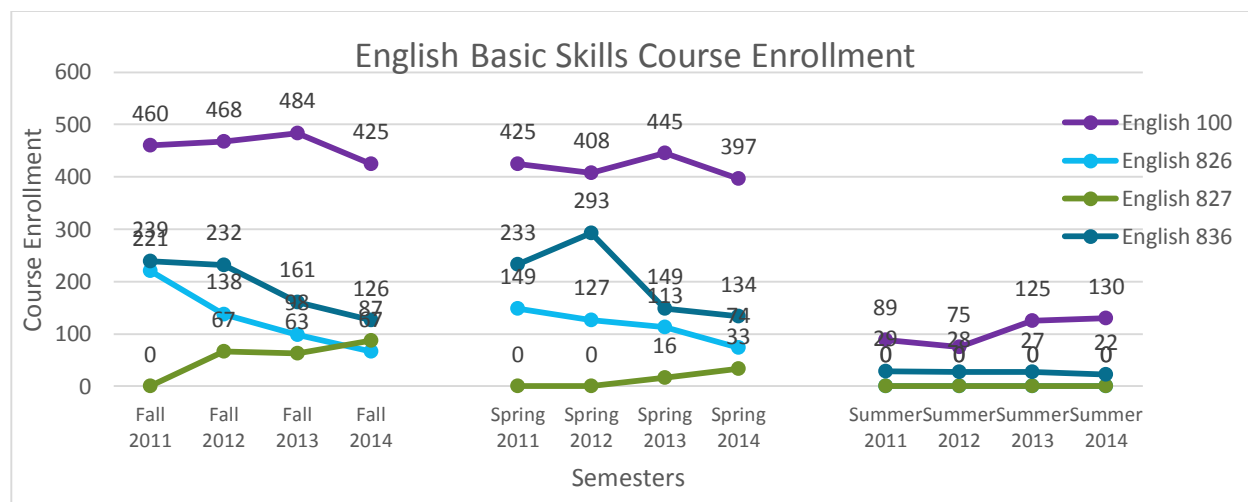


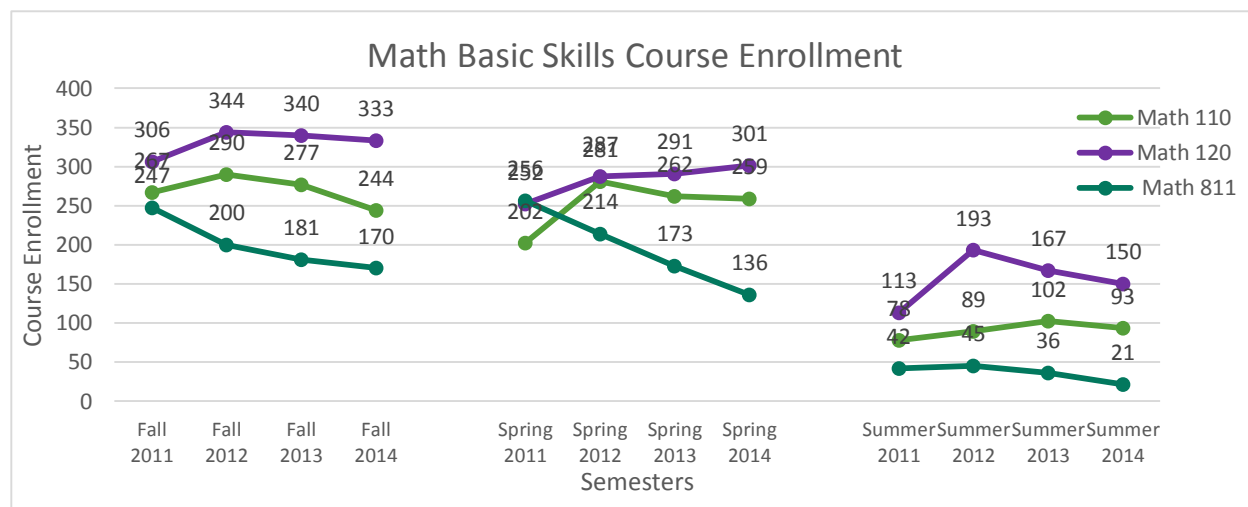
DID STUDENTS COME TO US BETTER PREPARED?

WHAT WAS OUR MATH AND ENGLISH BASIC SKILLS ENROLLMENT TREND?

English 826 (two level below College English) and English 827 (one level below College English) have a trend of decline. English 827 is an accelerated course and has increase of enrollment. Our basic skills English courses (English 826 and 836) seemed to have declined trend.

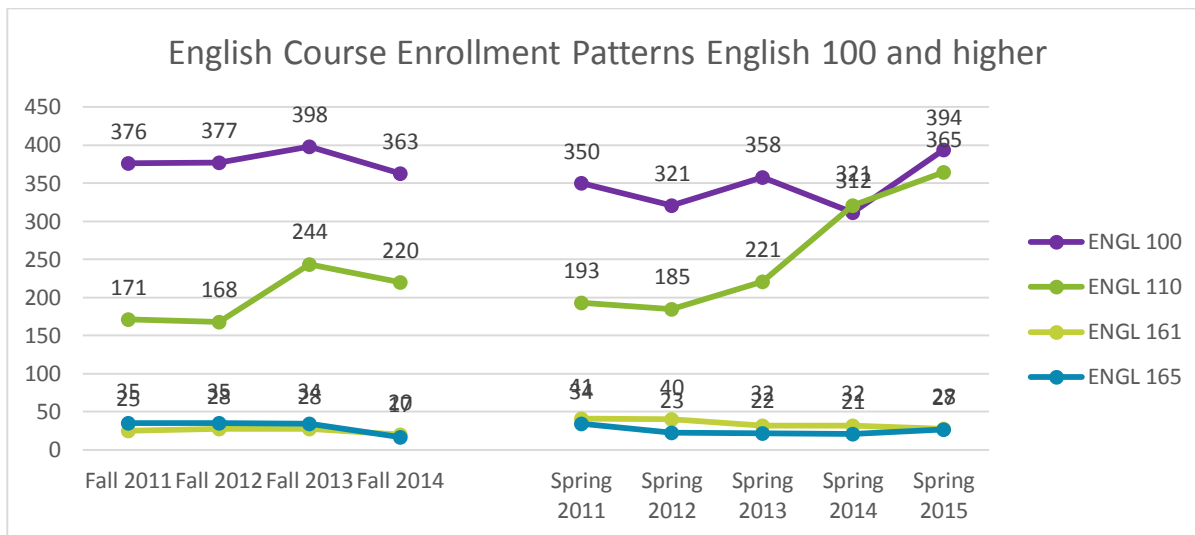


Similar phenomenon is demonstrated in math basic skills courses. Math 811 (three level below College math) and Math 110 (two level below College math) have a trend of decline. Math 120 (one level below) has a slightly increase of enrollment in spring semesters.

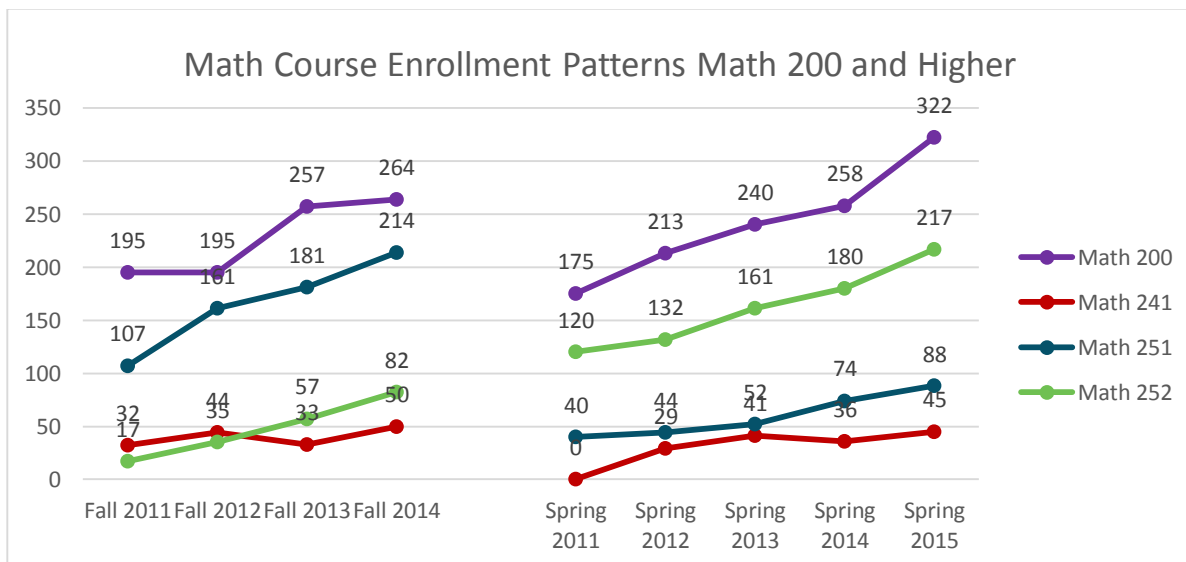


WHAT IS OUR ENGLISH AND MATH TRANSFER COURSES ENROLLMENT TRENDS

There is an increase of enrollment in English 110 and a highest enrollment for English 100 in spring 2015.

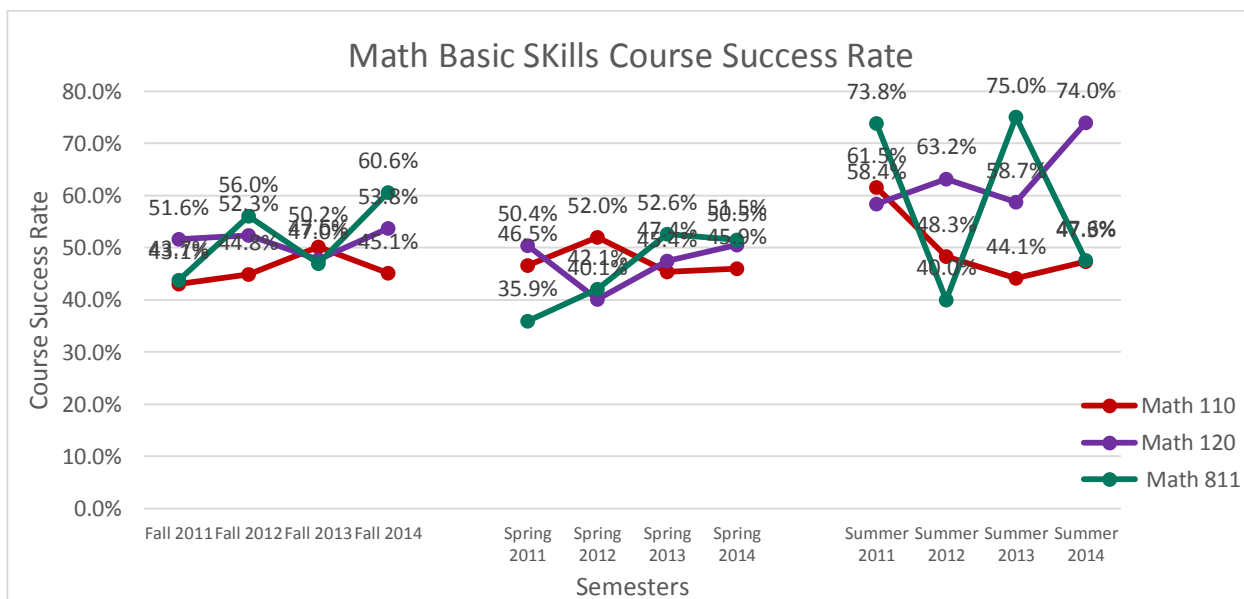
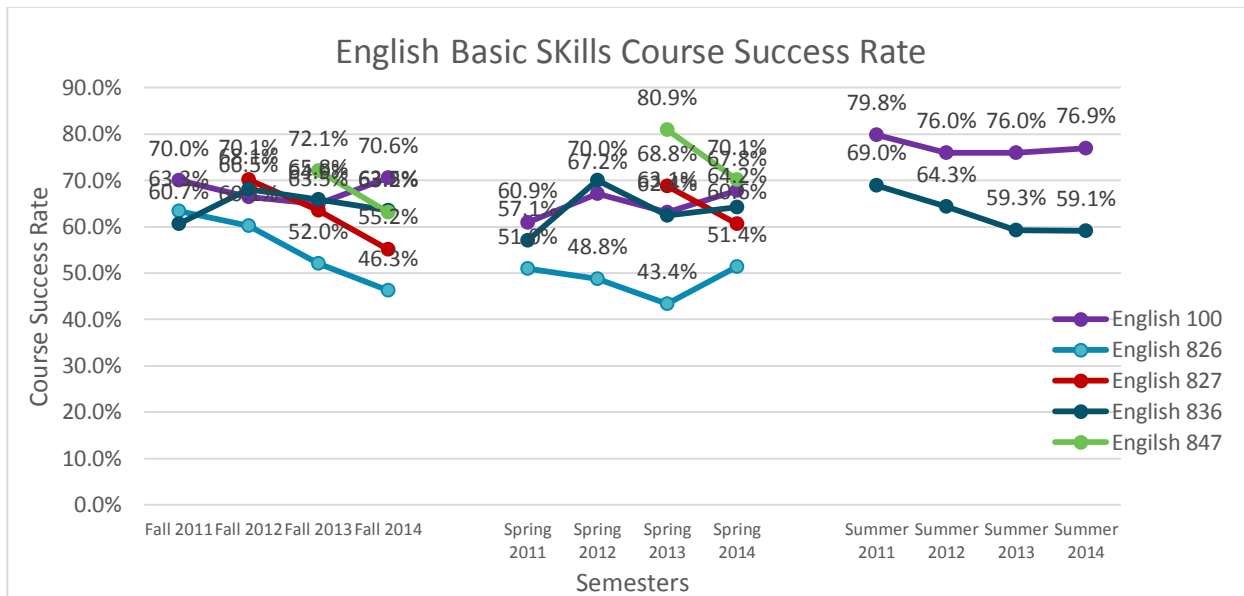


There is a steady increase pattern in Math 200, Math 251, and Math 252.



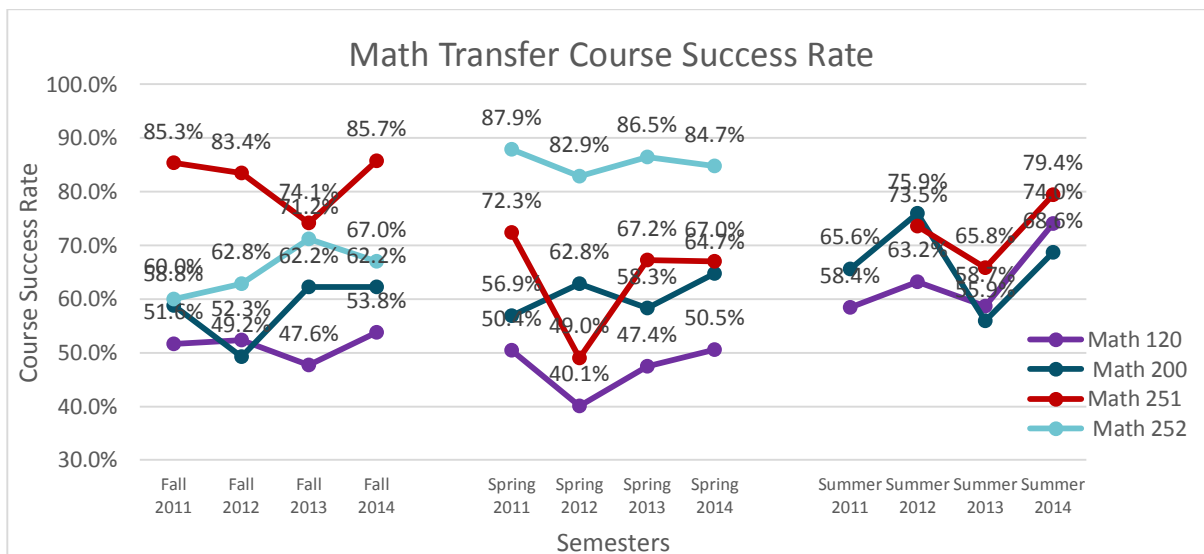
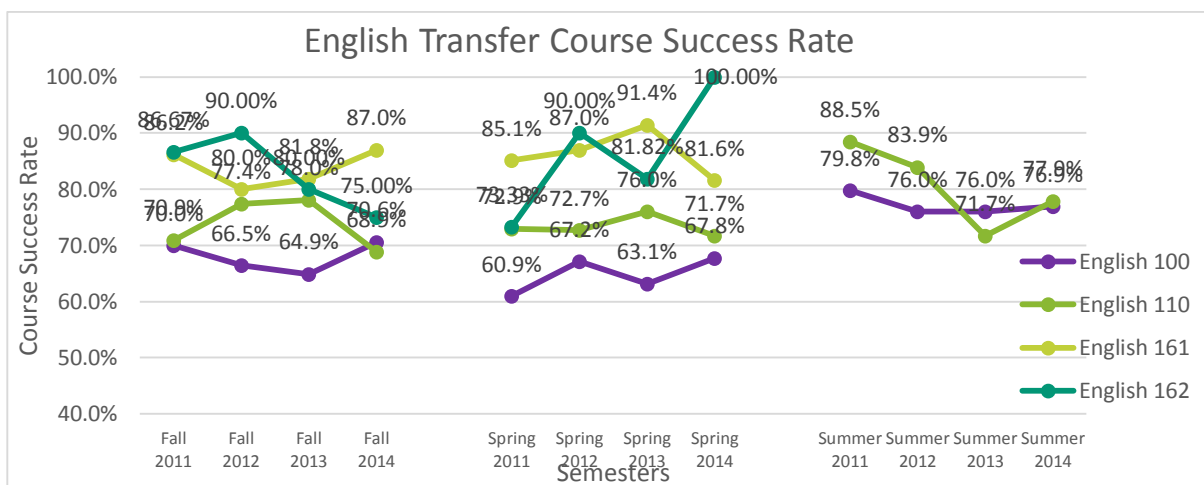
ENGLISH AND MATH SUCCESS RATES

There is no patterns to describe or conclude English and math basic skills courses.



SUCCESS RATE FOR ENGLISH AND MATH TRANSFER COURSES

There is no patterns to describe or conclude English and math transfer courses.



WHAT DOES IT ALL MEAN?

Wild hypothesis:

1. Cañada College may start to attract different kind of student clientele who are stronger in academic preparation and interested in higher level math based on the data presented here.
2. In addition, our interventions (Math Jam, Word Jam, and other academic support interventions) may also hugely contribute to students' enrollment on transfer courses and success.

We need to continue monitoring our longitudinal data to prove this hypothesis.

Data Sources: Cañada Data Dashboard

Files: Enrollment for Math Eng Overall; Math English Basic Skills Trend Data; Janet Enrollment for GateCourses