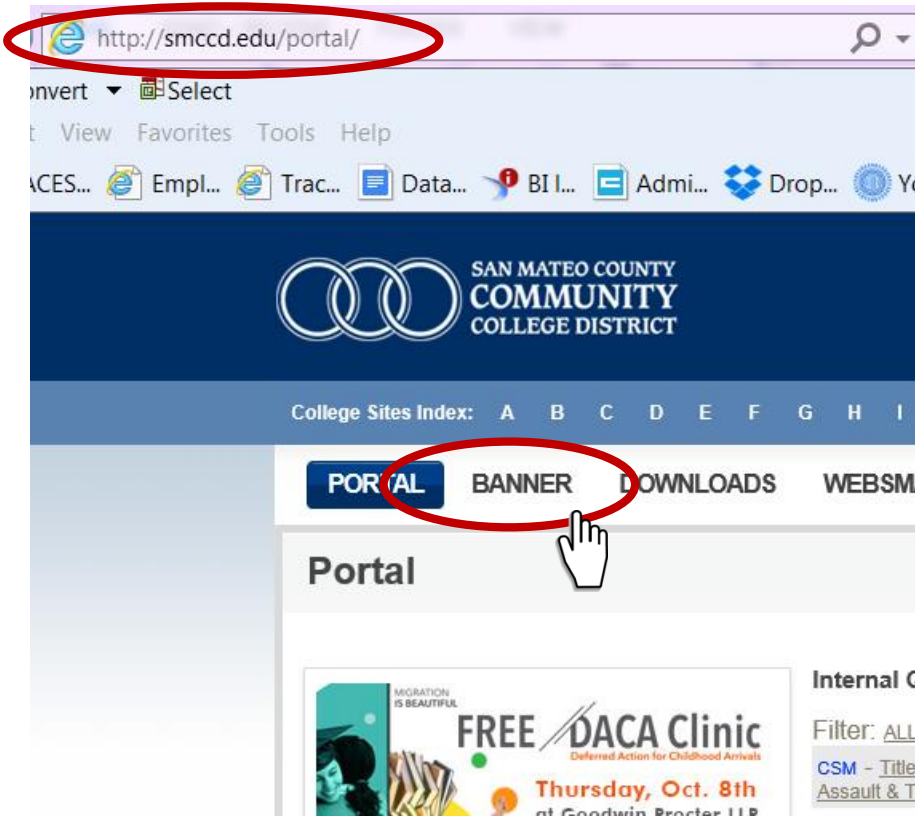
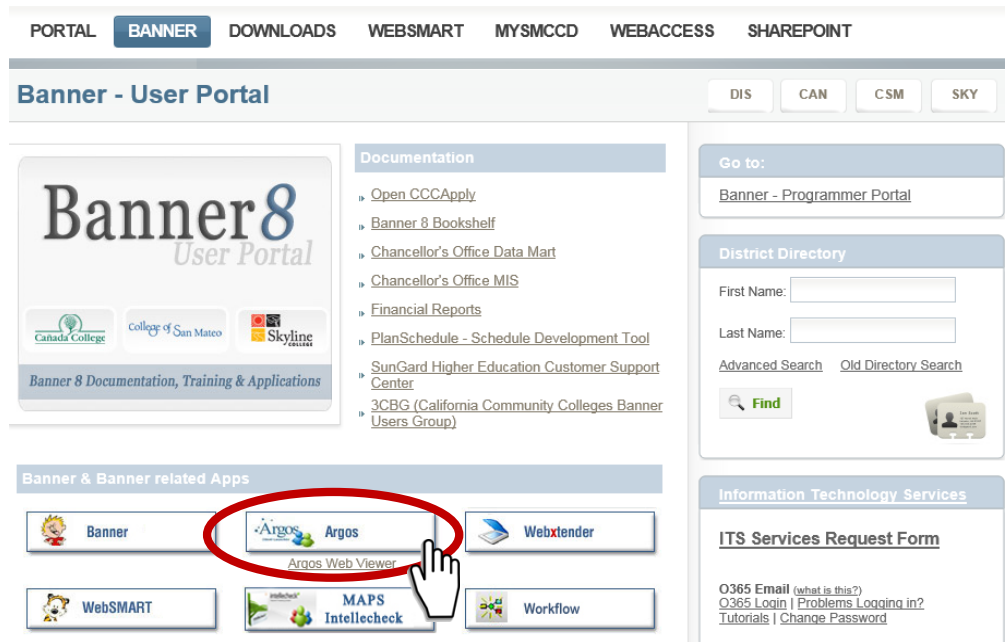


Cañada College Data Dashboard Access **Draft**

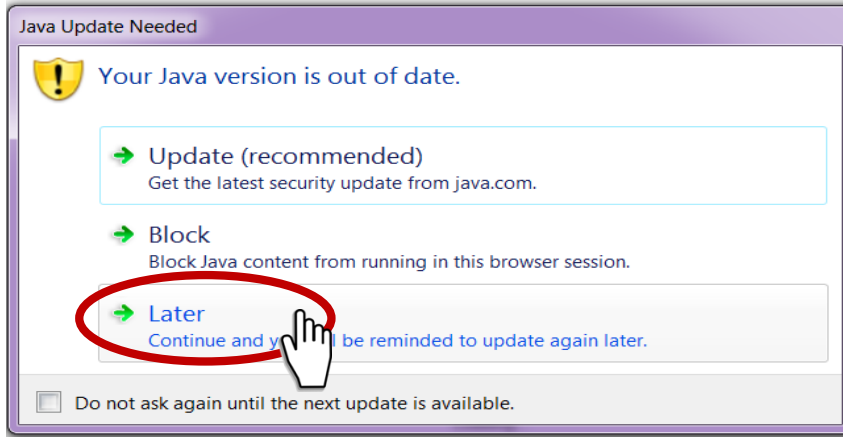


Go to SMCCD portal
<http://smccd.edu/portal>
Click on "Banner"

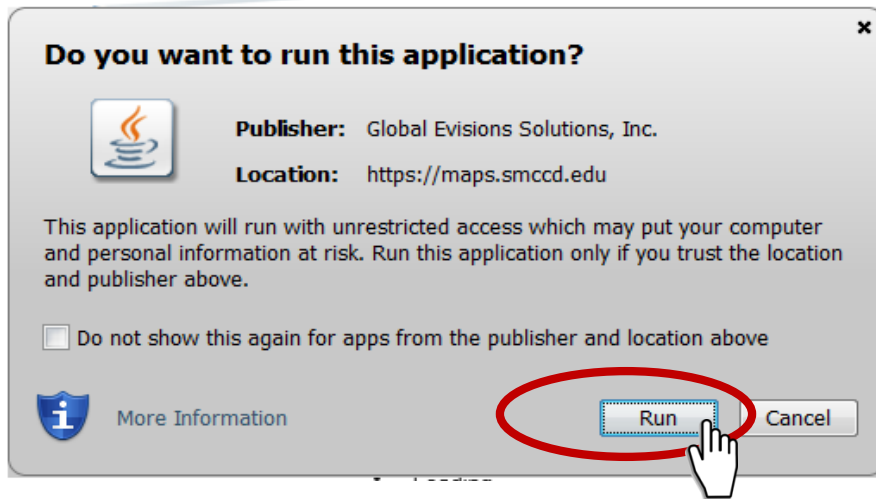


Click on "Argos"

Cañada College Data Dashboard Access **Draft**



If this window pops up, click "Later".



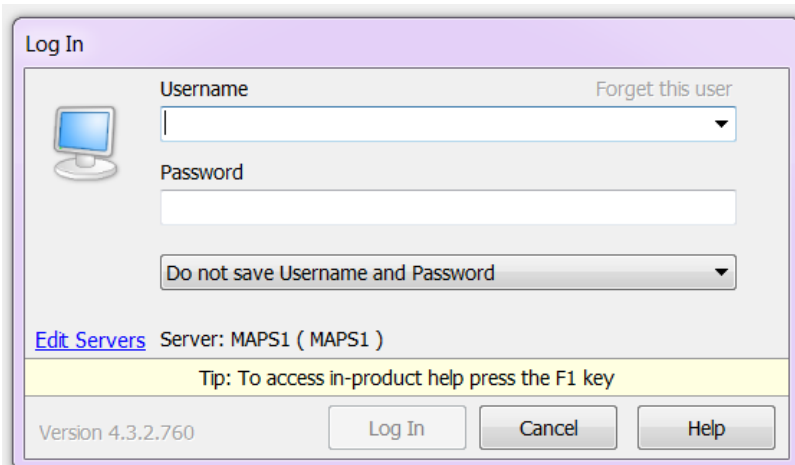
If this window pops up, click "Run".



Argos runs and you wait!



Cañada College Data Dashboard Access **Draft**



Log In

Username Forget this user

Password

Do not save Username and Password

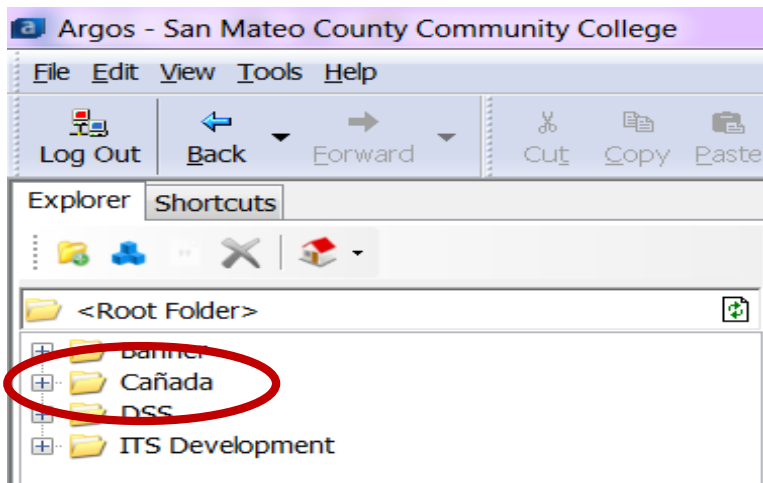
[Edit Servers](#) Server: MAPS1 (MAPS1)

Tip: To access in-product help press the F1 key

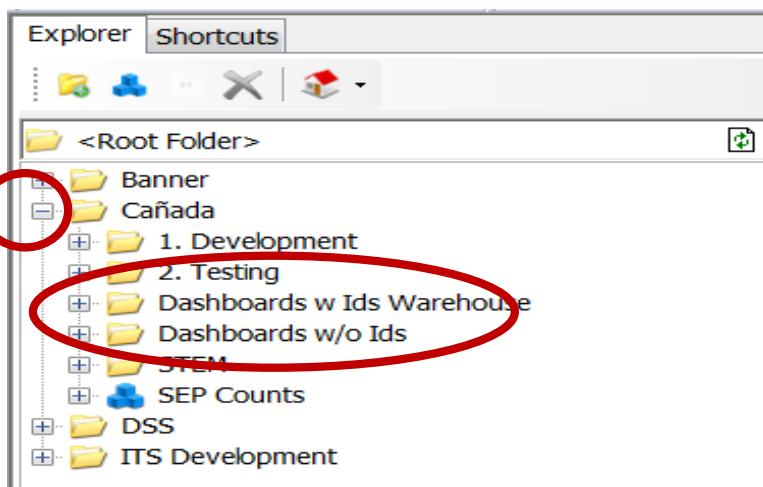
Version 4.3.2.760

Log In Cancel Help

Type your
Username: last name first name initial
Password: email password
Click "Log In"



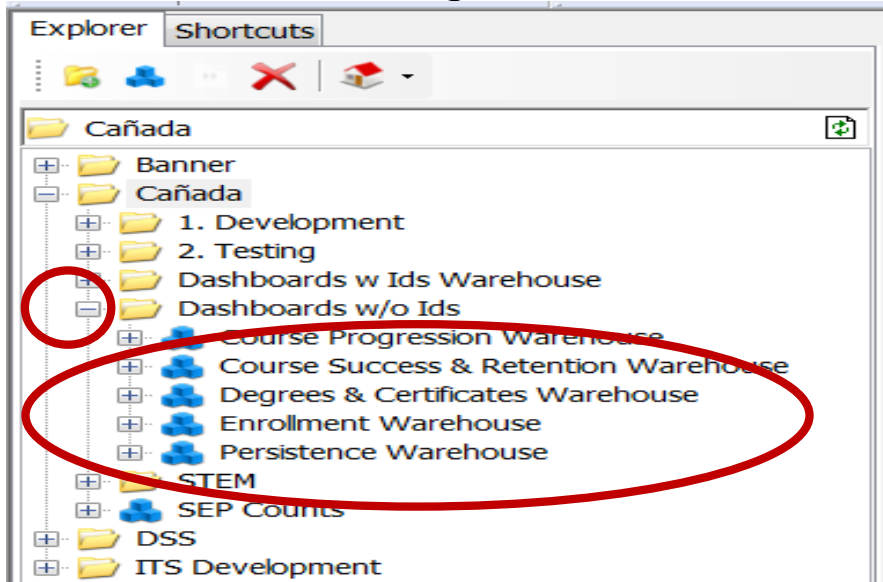
See Cañada Folder on the left hand side.



Click on the "+" sign in front of **Cañada** folder.

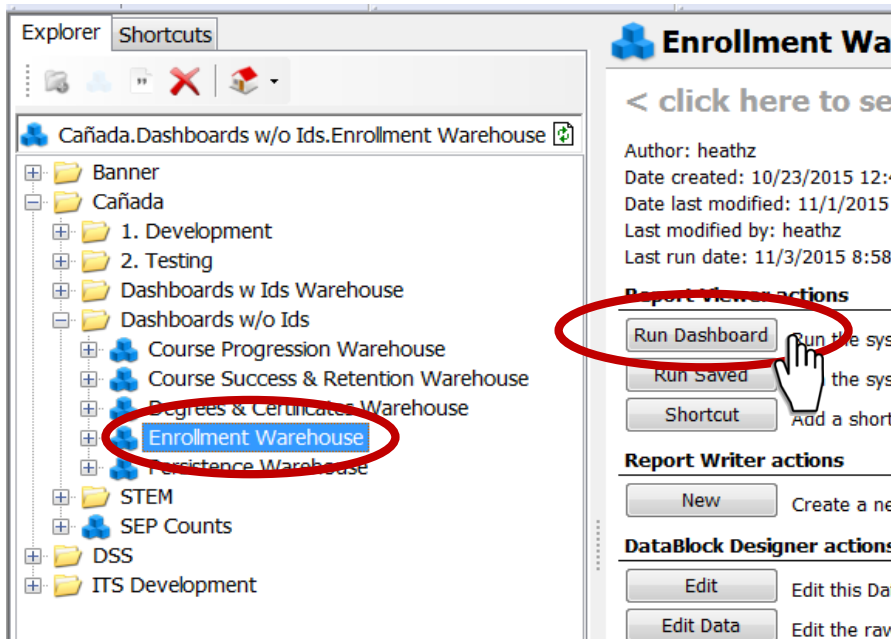
The folder you have access will be displayed.

Cañada College Data Dashboard Access **Draft**



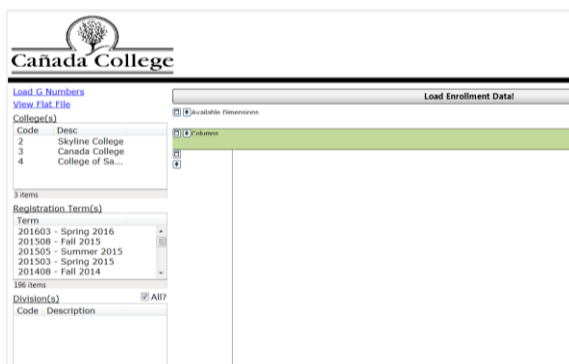
Click on the “+” sign in front of the folder “Dashboards w/o Ids”.

The dashboards you have access will be displayed.



One Click on “Enrollment Warehouse”

One Click on “Run Dashboard” and wait!



Now you are in the Enrollment Warehouse.