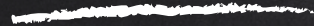




DRC



Full - Time Instructional Aide

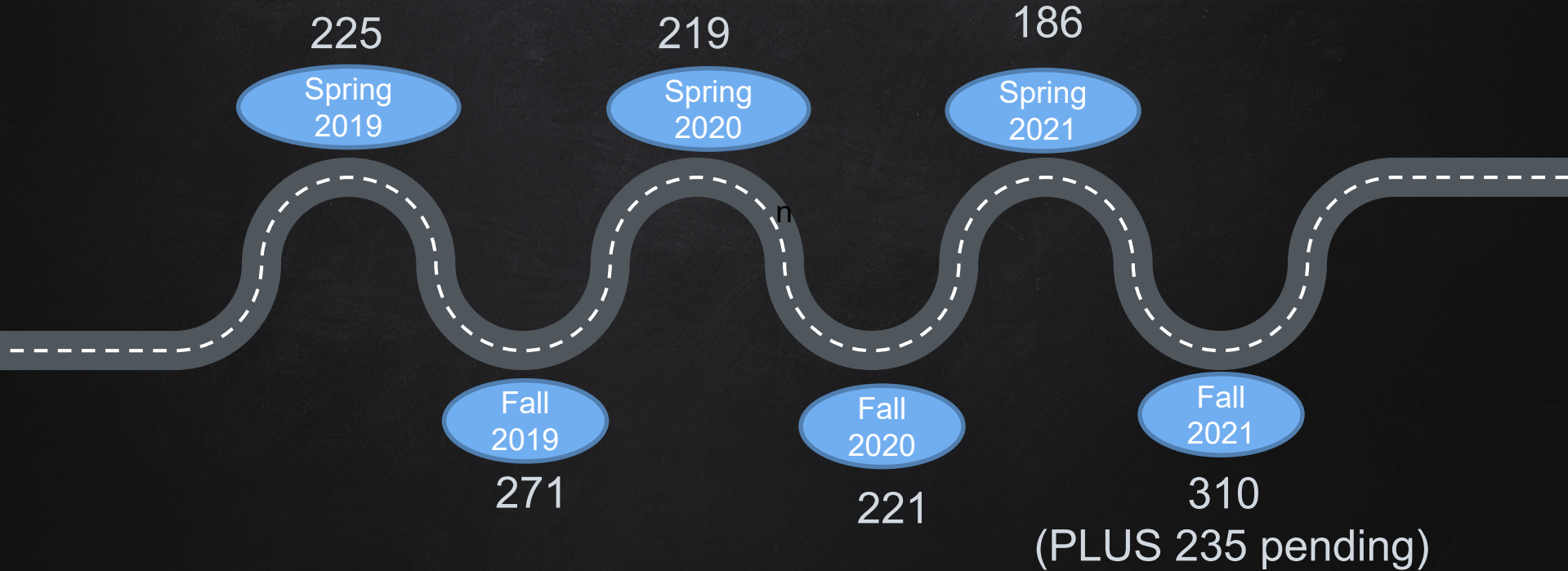


Alt Media Lab



Presented by
Bettina Lee

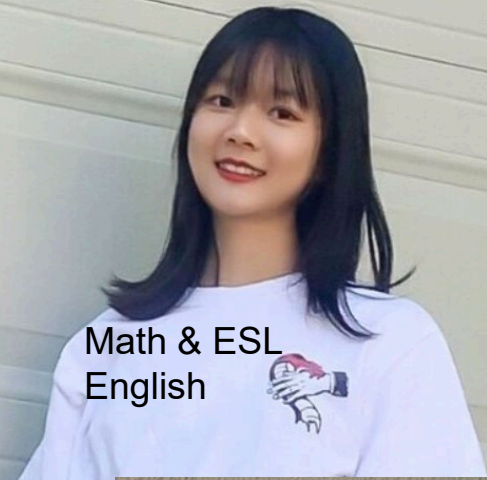
Data History



Biology



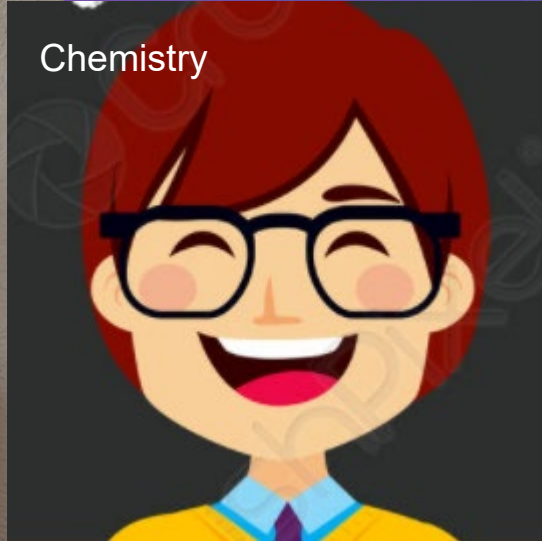
Math & ESL
English



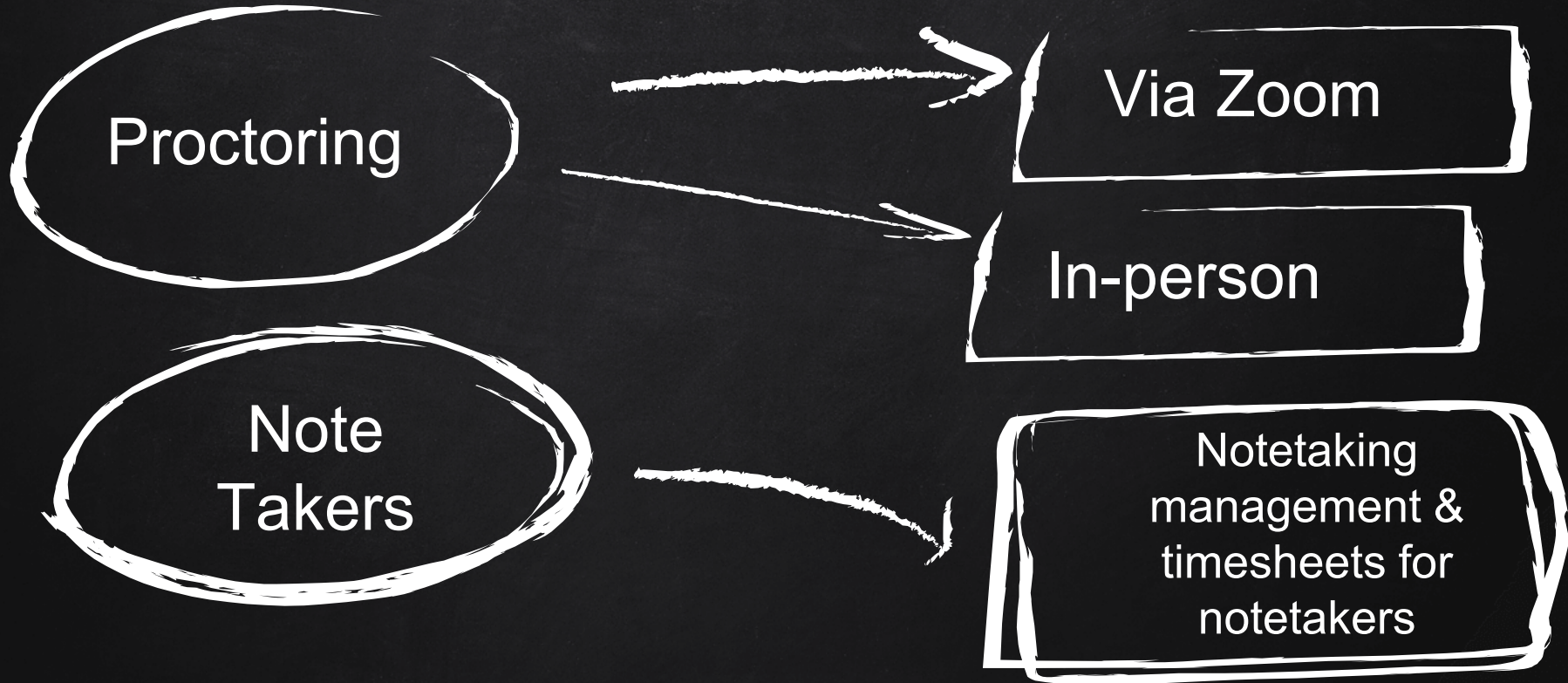
English &
Graphic
Design



Chemistry



Other Important Management Duties
that are required every day all year around





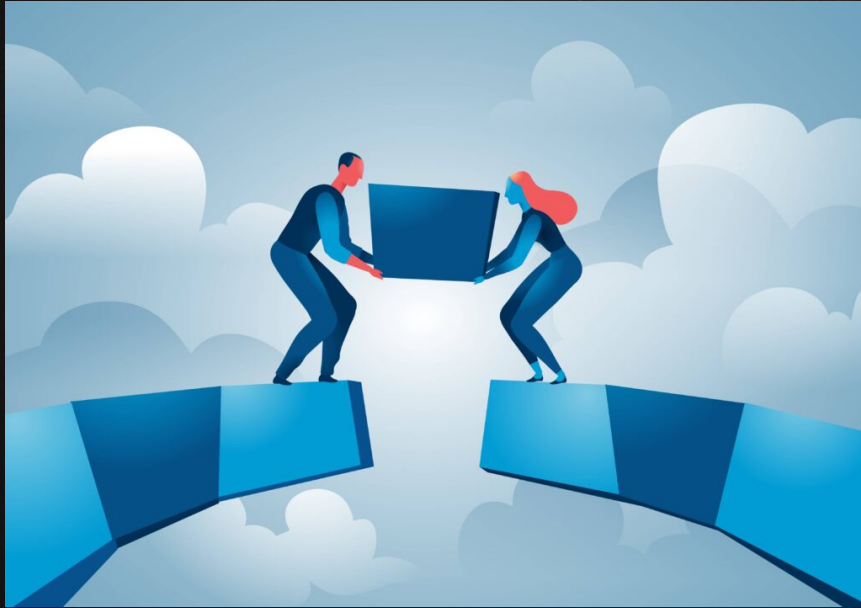
How does this new
position support
the college's
vision and values?

Answer:

By Closing the GAP!



Values



- Transforming Lives
- Diverse and Inclusive Environment
- Student Success in Achieving Educational Goals

Vision

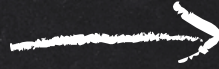
- Diverse culture
- Practice of personal support
- innovative program

Improve Retention

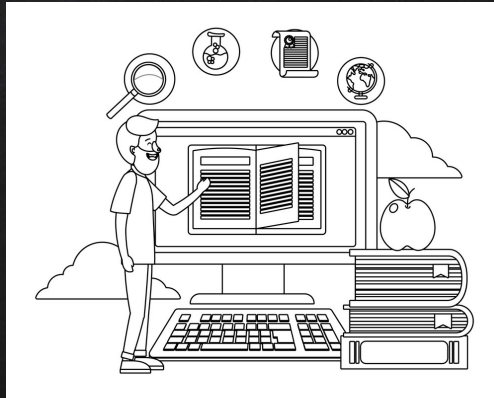


Request

One 11 month, 22
hour a week
Instructional Aide
position



One 12 month,
37.5 hour a week
Instructional Aide
position



What will happen if this position does not become full-time?

- Alt Media Lab will NOT be open every day
- Proctoring sessions will NOT be offered every day
- No one will be designated to manage robot
- Notetakers' pay will most likely be delayed
- Problems with notetaking accommodation will NOT be addressed in a timely manner
- In-person tutoring in Alt Media lab will NOT be available all day every day
- *The college will be more vulnerable to legal liability violations - for not providing students timely access to disability related accommodations and support.*



thanks!

Any questions?

