



Request for New KAD Positions Presentation

Dean/Athletic Director
Division Assistant
Equipment Manager
Program Services Coordinator
Sports Information Director
Office Assistant II

Requested on behalf of KAD: Ana Miladinova, Bryan Jeong, Nick Carr, and Matt Lee

Kinesiology, Athletics and Dance Division Overview

The Kinesiology, Athletics and Dance (KAD) Division of Cañada College offers a variety of programs that lead to AA/AA-T degrees in both [Kinesiology](#) and [Dance](#), providing career exploration within the health industry, and academic support to transfer to 4-year colleges or universities. The mission of the KAD Division is to facilitate wellness among individuals through the study and application of human movement principles through participation in physical activity, exercise, and sports.

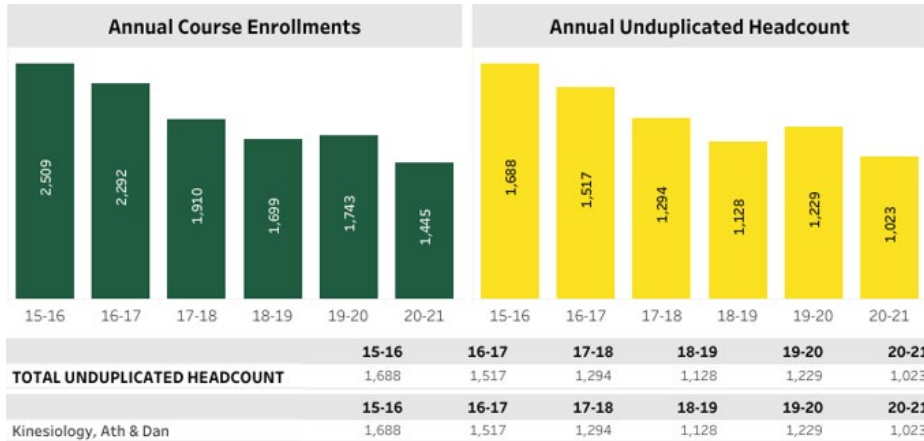
Specific coursework may focus on movement, exercise health science, exercise physiology, productivity and aims to help improve physical and mental wellness. KAD's faculty and staff focus on the holistic student, allowing for discovery of academic success and personal well-being. Members of KAD are passionate about their fields and are excited to share their knowledge and be a part of the educational journey.

Cañada's intercollegiate athletics faculty (coaches) and staff are committed to student athlete personal development, academic success, and inclusiveness of diverse backgrounds through sport participation. The Athletics Department recognizes the value of a comprehensive education and commits to a model of excellence, showcasing principles of sportsmanship, equal opportunities to all genders and transitioning students in the spirit of Title IX. The Colts are committed, responsible for, and obligated to uphold the integrity of the Mission, Vision, and Values of the College.

The Colts, as a member in good standing with the [California Community College Athletic Association](#), abides by all the rules and regulations of the CCCAA, and the [Coast Conference](#). The Colts embrace the policies, rules, and regulations of these member organizations as well as those of the College and the San Mateo County Community College District.



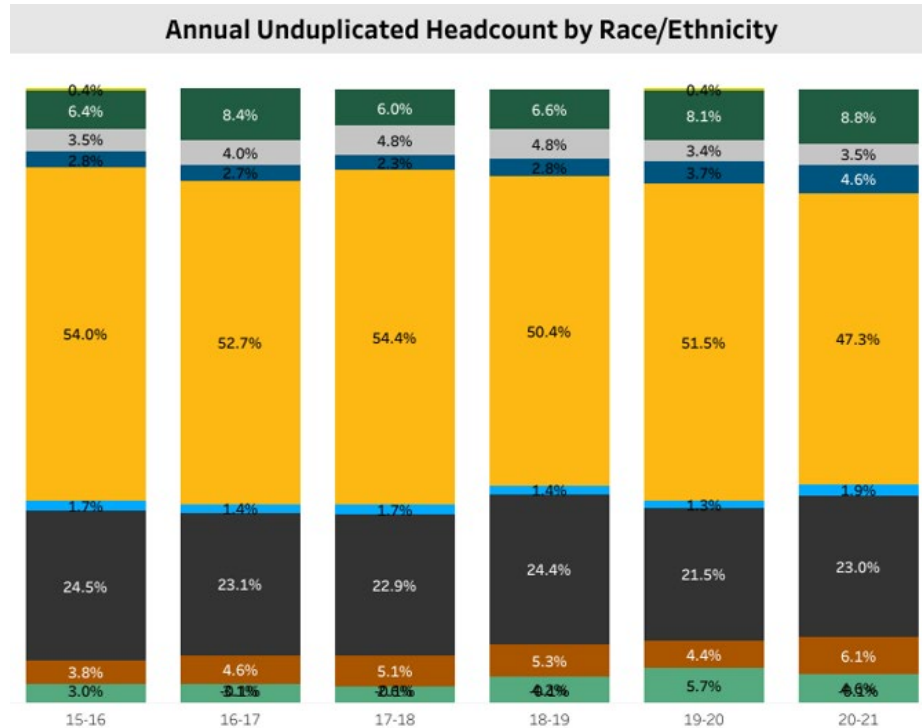
KAD Student Enrollment (5 Year Trend)



	15-16	16-17	17-18	18-19	19-20	20-21
Female	982	864	770	652	738	649
Male	668	620	490	454	465	347
Unreported	38	33	34	22	26	27

	15-16	16-17	17-18	18-19	19-20	20-21
Under 18	177	167	164	124	124	151
18 - 22	773	674	560	558	624	489
23 - 28	304	266	235	209	194	142
29 - 39	208	219	167	136	163	140
40 - 49	114	102	81	42	59	55
50 - 59	70	65	58	35	44	34
60 +	42	24	29	24	21	12

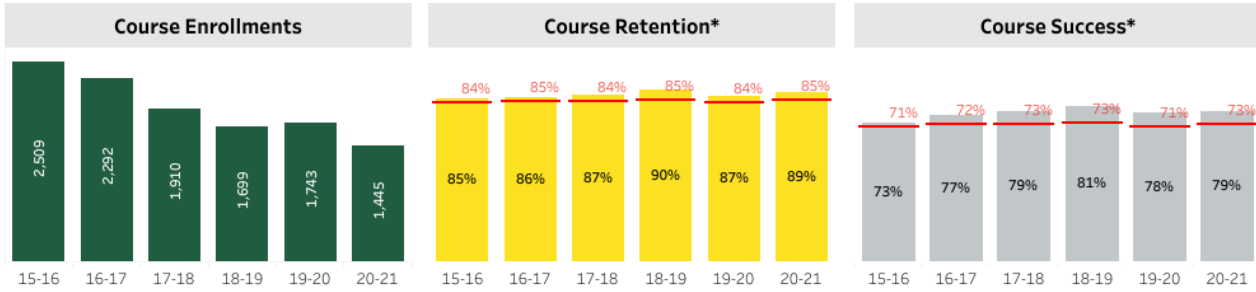
	15-16	16-17	17-18	18-19	19-20	20-21
AI/AN	6	*	*	*	5	*
Asian	108	127	77	74	100	90
Black/African American	59	60	62	54	42	36
Filipino	47	41	30	32	45	47
Hispanic/Latinx	912	799	704	568	633	484
Pacific Islander	28	21	22	16	16	19
White	414	350	296	275	264	235
Multiraces	64	70	66	60	54	62
Unknown	50	47	34	47	70	47



	15-16	16-17	17-18	18-19	19-20	20-21
AI/AN	6	*	*	*	5	*
Asian	108	127	77	74	100	90
Black/African American	59	60	62	54	42	36
Filipino	47	41	30	32	45	47
Hispanic/Latinx	912	799	704	568	633	484
Pacific Islander	28	21	22	16	16	19
White	414	350	296	275	264	235
Multiraces	64	70	66	60	54	62
Unknown	50	47	34	47	70	47



KAD Course Outcomes (5 Year Trend)



Division: Kinesiology, Ath & Dan Gender: All Race/Ethnicity: All

* Red line is collegewide comparison

		15-16	16-17	17-18	18-19	19-20	20-21	Total
TOTAL	Enrollments	2,509	2,292	1,910	1,699	1,743	1,445	11,598
	Course Retention	85%	86%	87%	90%	87%	89%	87%
	Course Success	73%	77%	79%	81%	78%	79%	77%

- Select Metric(s)
- Enrollments
 - Course Retention
 - Course Success

		15-16	16-17	17-18	18-19	19-20	20-21	Total
Female	Enrollments	1,351	1,170	1,021	890	939	813	6,184
	Course Retention	83%	82%	84%	88%	84%	87%	84%
	Course Success	70%	72%	74%	78%	76%	75%	74%
Male	Enrollments	1,106	1,066	835	777	768	598	5,150
	Course Retention	88%	90%	92%	92%	89%	91%	90%
	Course Success	76%	82%	85%	85%	81%	83%	82%
Unreported	Enrollments	52	56	54	32	36	34	264
	Course Retention	92%	88%	85%	91%	89%	91%	89%
	Course Success	71%	71%	80%	78%	78%	82%	76%

- Division:
- Academic Support & Learn Tech
 - Bus. Design & Workforce
 - Counseling
 - Humanities & Soc Sci
 - Kinesiology, Ath & Dan
 - Science & Technology

		15-16	16-17	17-18	18-19	19-20	20-21	Total
AI/AN	Enrollments	10	*	*	*	*	*	37
	Course Retention	60%	60%	60%	60%	60%	60%	86%
	Course Success	60%	60%	60%	60%	60%	60%	84%
Asian	Enrollments	145	186	105	101	127	132	796
	Course Retention	91%	91%	83%	91%	83%	95%	89%
	Course Success	84%	83%	76%	85%	76%	89%	82%
Black/African American	Enrollments	99	109	131	92	62	51	544
	Course Retention	82%	87%	82%	87%	84%	80%	84%
	Course Success	69%	79%	76%	76%	69%	71%	74%
Filipino	Enrollments	68	47	39	42	55	57	308
	Course Retention	87%	83%	79%	95%	84%	88%	86%
	Course Success	72%	68%	69%	88%	64%	72%	72%
Hispanic/Latinx	Enrollments	1,346	1,188	1,026	851	903	670	5,984
	Course Retention	85%	84%	88%	90%	86%	87%	86%
	Course Success	71%	73%	79%	82%	78%	75%	76%
Pacific Islander	Enrollments	41	37	36	24	22	27	187
	Course Retention	78%	81%	89%	88%	86%	78%	83%
	Course Success	61%	68%	78%	79%	64%	70%	70%
White	Enrollments	621	524	419	439	387	346	2,736
	Course Retention	86%	90%	88%	89%	90%	90%	89%
	Course Success	74%	83%	79%	81%	82%	82%	80%
Multiraces	Enrollments	107	123	102	88	81	89	590
	Course Retention	86%	85%	90%	93%	89%	91%	89%
	Course Success	79%	77%	84%	83%	84%	84%	82%
Unknown	Enrollments	72	73	46	60	98	67	416
	Course Retention	83%	86%	89%	87%	86%	90%	87%
	Course Success	74%	79%	85%	80%	77%	82%	79%

- Subject:
- Gender:
- Race/Ethnicity:

Reset

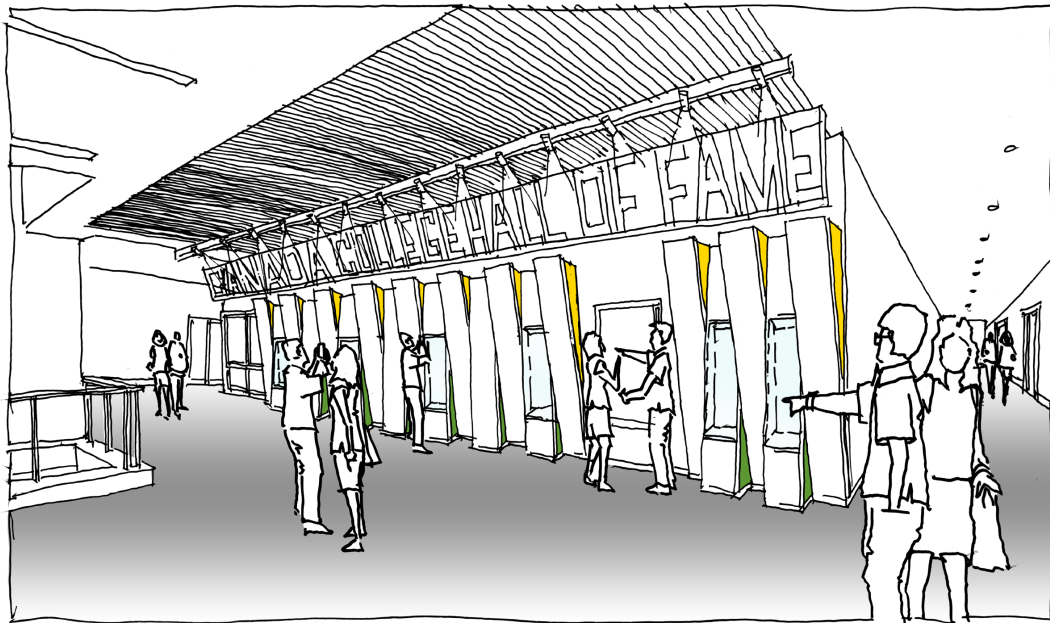
NOTE: S subpopulations with fewer than 10 enrollments are suppressed. Data updated: 6/30/2021 10:56:42 PM. To avoid misinterpretation of dashboard data, consultation with PRIE is strongly recommended prior to using any of the data for research or publication.



KAD Division Updates (5 Year Overview)

- Division of ALL → Division of ASLT → Office of Instruction → **KAD Division**
- [Resolution](#) in Support of Kinesiology, Athletics and Dance
- Emergence of Building 1 Kinesiology and Wellness (~110K sq. ft)
 - Procurement of Resources (Measure H)
 - FF&E
 - Marketing and Branding
 - Relocation of Office Space
 - Community Fitness
- Faculty Retirement and Replacements

- Yearly CCCAA In-Service Training
- Bi-Annual Title IX Training with District Representatives
- Monthly KAD Division Meetings
- Monthly Dance Division Meetings
- Bi-Monthly Athletics Department Meeting
- Annual Fall Dance Show
- Ninety Two (+) Athletic Home Events per Academic Year
- Catalyst for COVID-19 Policies and Procedures College/District-wide
- California Senate Bill 206 Name, Image, and Likeness (Fair to Play Act)



Dean / Athletic Director of Kinesiology, Athletics and Dance

Closing the equity gaps identified in the Program, Division or College?

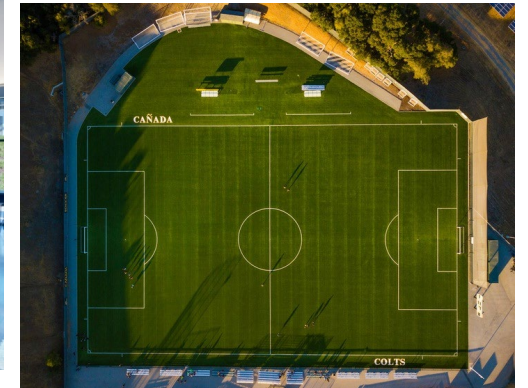
- Collect data and utilize insights to take action.
 - *The ability for a permanent administrator to continuously collect and monitor data allows KAD to detect student needs and advocate for interventions that work for underrepresented students or student groups. This approach provides a clear and direct path toward student equity.*
- Transcend demographics and historical academic data.
 - *Incorporate engagement and support participation, allowing for actionable context to help guide students towards better outcomes. Applying a more timely and equitable approach to understanding students allows for real-time views of student vulnerability, avoiding generalizations about who needs support.*

Contributing to Latinx (HSI) and Asian American, Native American, and Pacific Islander (AANAPISI) student success in the Program, Division or College?

- Understand the impact of student success services and programs.
 - *Designing outreach through predictors of success within each subpopulation to determine what students need most. An Administrator must know which students, especially in KAD, might be vulnerable, and when, for different outcomes. **In other words:** Who needs support at what time? What works and for whom? Which combinations of strategies best accomplish the goal of promoting equity in student success?*
- Develop and institutionalize initiatives and policies, starting with the most used, to understand the impact for different types of students.

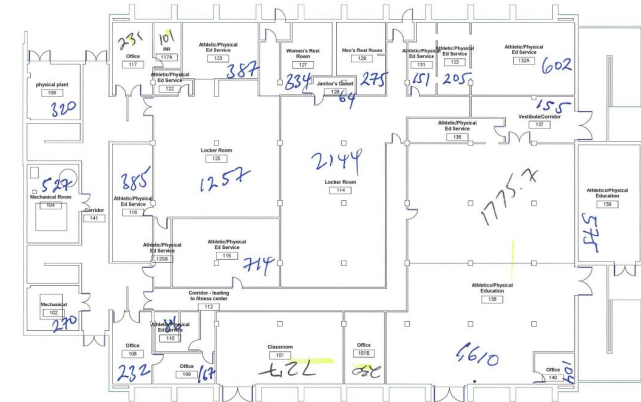
Contributing to Black and African American student success in the Program, Division or College?

- Develop a more integrative culture of safety, care, and support within KAD.
 - *Supporting race dialogue to honor and acknowledge the reclamation of racialized spaces, safety, and healing.*
 - *Creating race-alike work, intergroup dialogue to strengthen allyship and coalition building at all levels of the division.*
- Envision possibilities and exchange ideas for institutional transformation.
 - *Provide leadership through the engagement of various support programs such as UMOJA, COLTS LC, College Anti-Racist Framework, and Title IX Training / Equity in Athletics Disclosure Act, exploring and discovering racial inequity in both the antiracist and anti-oppressive frameworks, which allows for the exploration and discovery of identity.*



Division Assistant

- The KAD Division Assistant will perform complex and detailed clerical and administrative support for the Division Administrator with an expectation of resolving problems and making independent decisions with minimum supervision.
- The Division Assistant initiates, implements and coordinates office procedures and timelines, while exercising independent judgment, in order to complete major projects while supporting programs and services.
- The Division Assistant is responsible for the modification and maintenance of the KAD Division schedule, serving as a resource to the Dean/Athletic Director, faculty, staff and students, while adhering to campus guidelines and timelines.
- The Division Assistant provides organizational support on budget maintenance and reconciliation, working closely with the VPA's office to follow proper accounting procedures.
- Public contact is extensive, and involves college and district staff, faculty, students, vendors, other educational institutions, business and community representatives, regulatory agencies, and governmental agencies for the purpose of exchanging policy and procedural information.

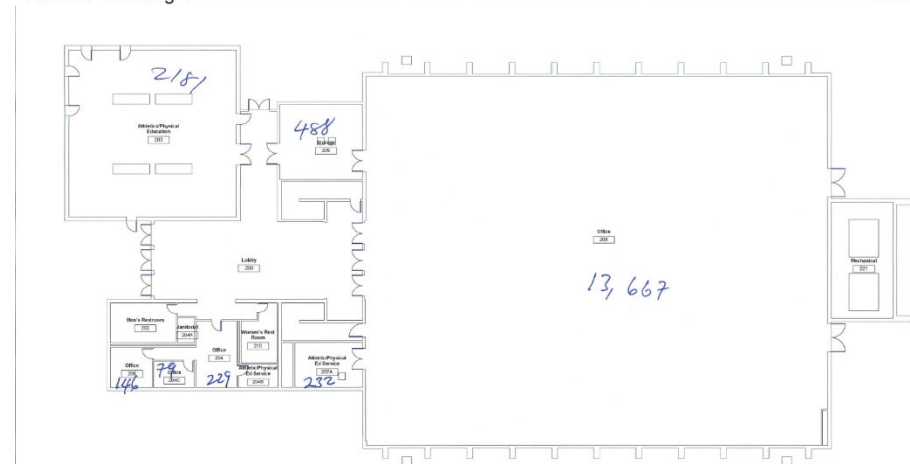


These numbers are approximately and square feet.

14,423

Cañada - Building 1

Level 1



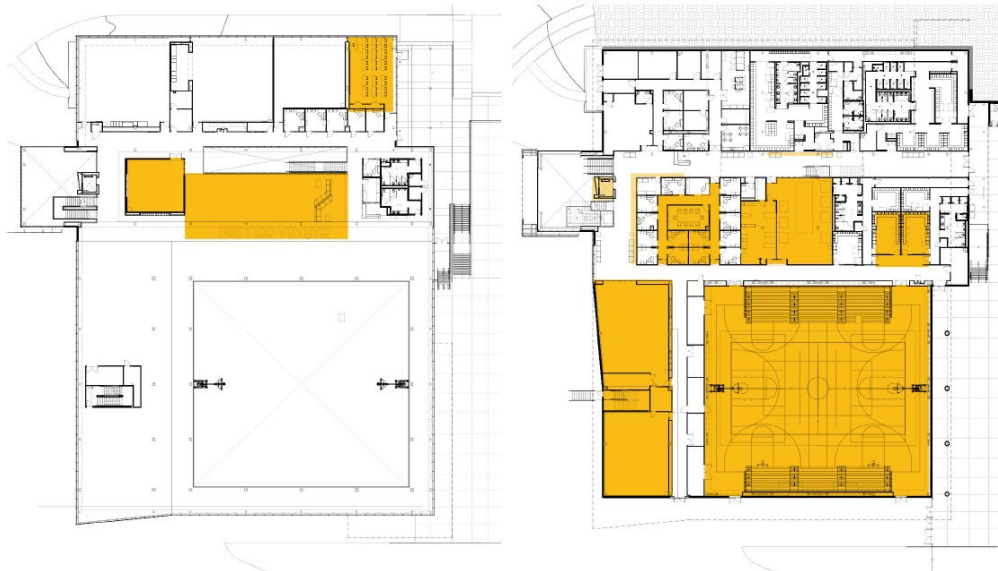
These numbers are approximately and in square feet.

20,249

Cañada - Building 1

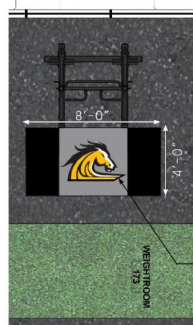
Level 2

Equipment Manager



LEVEL 2 KEY PLAN

LEVEL 1 KEY PLAN



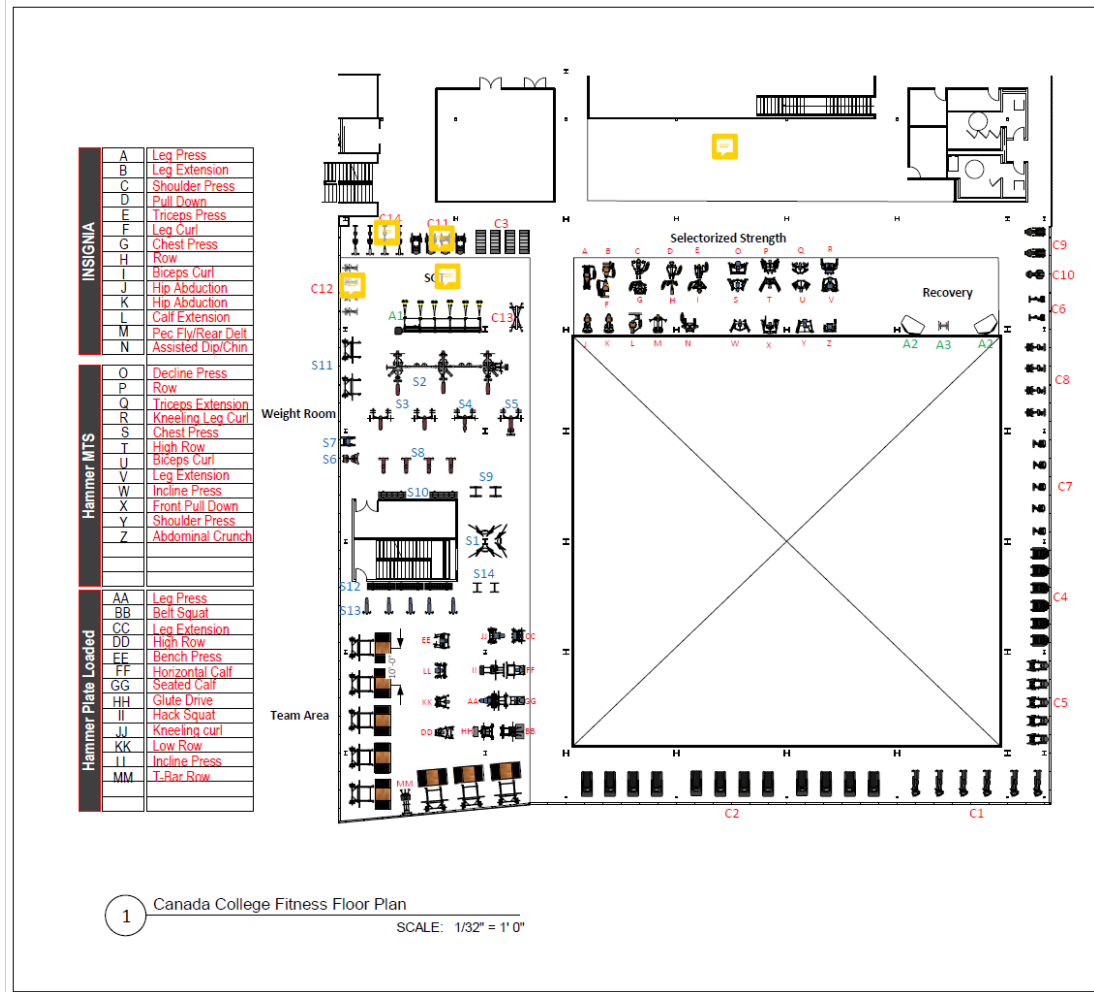
COLTS MASCOT

4'x 8' Floor inlay at lifting area with mascot set in neutral background

PLAE EPDM Standard Color Chosen



PLAE EPDM Standard Colors do not offer a fitting shade of green



INSIGNIA	A	Leg Press
	B	Leg Extension
	C	Shoulder Press
	D	Pull Down
	E	Triceps Press
	F	Leg Curl
	G	Chest Press
	H	Row
	I	Biceps Curl
	J	Hip Abduction
	K	Hip Abduction
	L	Calf Extension
	M	Pec Fly/Rear Delt
	N	Assisted Dip/Chin
Hammer MTS	O	Decline Press
	P	Row
	Q	Triceps Extension
	R	Kneeling Leg Curl
	S	Chest Press
	T	High Row
	U	Biceps Curl
	V	Leg Extension
	W	Incline Press
	X	Front Pull Down
	Y	Shoulder Press
	Z	Abdominal Crunch
Hammer Plate Loaded	AA	Leg Press
	BB	Belt Squat
	CC	Leg Extension
	DD	High Row
	EE	Bench Press
	FF	Horizontal Calf
	GG	Seated Calf
	HH	Glute Drive
	II	Hack Squat
	JJ	Kneeling curl
	KK	Low Row
	LL	Incline Press
	MM	T-Bar Row

Canada College
Redwood City

Josh Mello
Fitness Design Consultant
jmello@advancesexercise.com
858.735.2745
10/15/2021
V1.6

CARDIO EQUIPMENT

C1	Cross Trainer
C2	Treadmill
C3	HD Tread
C4	Stair-climber
C5	Arc Trainer
C6	IC7
C7	Upright Bike
C8	Recumbent Bike
C9	SciFit Pro 1
C10	SciFit StepOne
C11	HD Sparc
C12	HD AirBike
C13	Versa Climber

STRENGTH EQUIPMENT

S1	Free Motion CC
S2	MJ -12 Station
S3	Bench Press
S4	Incline Press
S5	Decline Press
S6	Back Extension
S7	Leg Raise
S8	Multi Adj Bench
S9	Barbell Rack
S10	Dumbbell Rack
S11	Half Rack
S12	HS Dmbbell Rck
S13	HS Mlti Adj Bnch
S14	HS Barbell Rack
S15	Power Rack 4x8
S16	
S17	
S18	
S19	
S20	
S21	
S22	
S23	
S24	
S25	

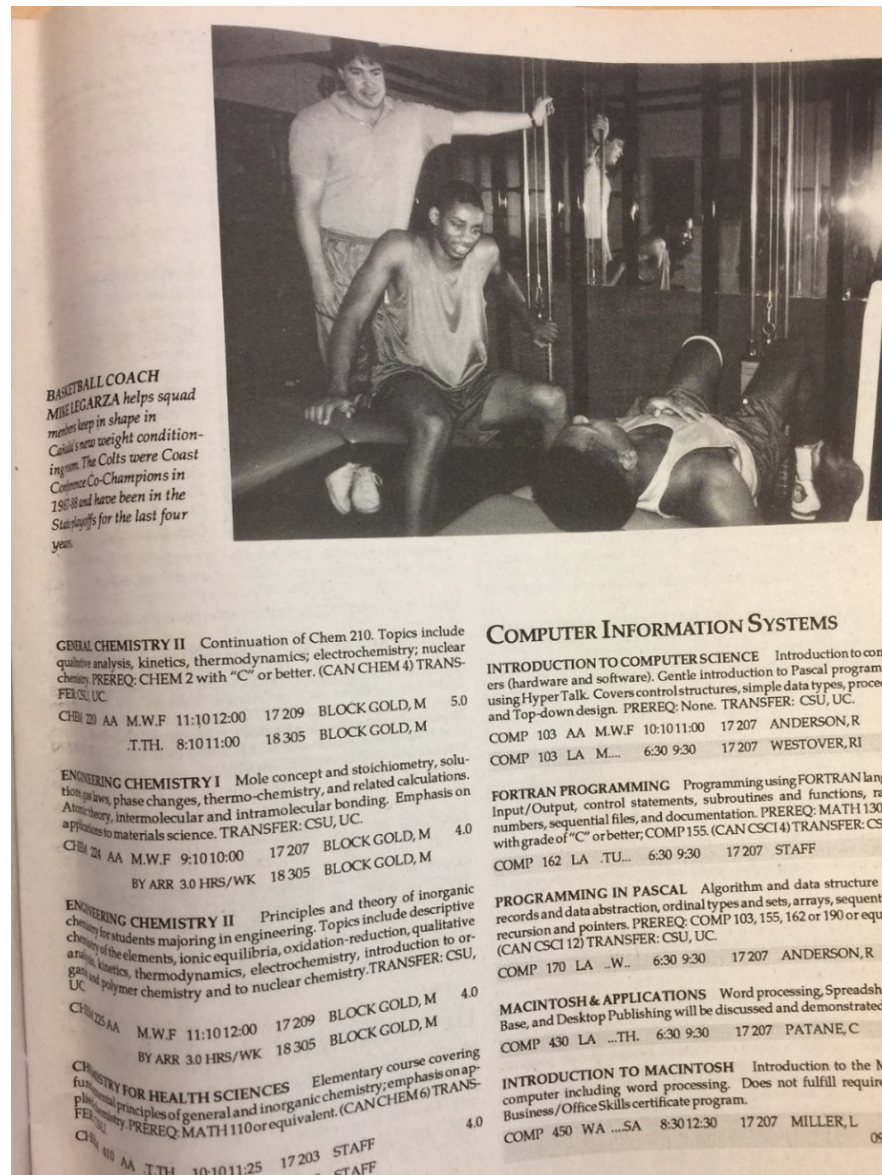
ACCESSORIES

A1	Synrgy180
A2	Stretch Trainer
A3	Mats
A4	
A5	
A6	
A7	
A8	

Program Services Coordinator

The dynamic role of the KAD Program Services Coordinator will provide, but not limited to, the following:

- Exchanging information with students, staff, other educational institutions, community and business representatives, vendors, governmental agencies and the general public regarding a variety of KAD programs and services.
- Identify viable and future program options through community outreach (dual-enrollment), planning for youth camps, and conducting market research on trends throughout the community.
- Participate with discussions regarding shared governance and other initiatives across the campus. **Follow through.**
- Ability to travel to various off-site locations, other colleges and universities, community organizations, and businesses promote and support students in KAD programs.
- Work directly with coaches integrating recruits/new students into Cañada College. Provide additional support and promotion for KAD programs such as the Community of Learning Through Sports (COLTS), KAD course offerings, intercollegiate athletic and dance events.



DANCE MOTION XII

Thursday, Dec. 13th, 2018 | 7:30 p.m.
 Cañada College Main Theatre, Building 3

Performing Salsa, Hip Hop, Ballet and Modern Styles
Special Guests from the Bay Area

\$5 Suggested Donation (Goes towards Dance Dept.) | **FACEBOOK PAGE:** Cañada College Dance Department

CONTACT: miladinovaa@smccd.edu
4200 Farm Hill Blvd., Redwood City, CA 94061

CANADA COLLEGE INTRODUCES

JAZZ DANCE

WITH CASSIE BEGLEY

SPRING 2021

TUESDAYS/THURSDAYS
11:10AM - 12:25PM

REGISTER TODAY!
WEBSCHEDULE.SMCCD.EDU

JAZZ I: DANC 130.1/43992 JAZZ III: DANC 130.3/43994
JAZZ II: DANC 130.2/43993 JAZZ IV: DANC 130.4/43995

WWW.CASSIEBEGLEY.COM

Sports Information Director

The Sports Information Director serves as a multifaceted resource. A few responsibilities are as follows:

- Works directly with coaches to stay in compliance with CCCAA bylaws (stats, game results, rules, and regulations).
- Prepares, maintains, and distributes all necessary statistics, rosters, and results.
- Maintains the Cañada College Athletic Department website in conjunction with PrestoSports.
- Liaison with campus marketing department.
- Oversight of all department social media outlets—Facebook, twitter, etc.
- Serves as member or the Cañada Athletics Hall of Fame committee.
- Responsible for the operation and staffing for all home athletic events (clock operators, public address announcers, videographers, and livestreaming).
- Provides information to prospective students and student athletes (Contiguous Recruiting District).
- The SID conducts regulatory changes to various media and online resources in order to stay in compliance with CCCAA bylaws and articles.

California Community College Contiguous Districts & High Schools

<p>San Mateo County CCD</p> <p>Cañada College College of San Mateo Skyline College</p>	<p>Cabrillo CCD, Chabot-Las Positas CCD, Foothill-De Anza CCD, Ohlone CCD, Peralta CCD, San Francisco CCD, West Valley-Mission CCD</p>
<p>High Schools:</p> <p>San Mateo County CCD: Alpha Beacon Christian, Aragon, Burlingame, Capuchino, Carlmont, Crystal Springs/Upland, Upland Christian, Eastside Prep, El Camino, Half Moon Bay, Hillsdale, Jefferson, Menlo, Menlo-Atherton, Mercy, Mills, Notre Dame, Oceana, Pescadero, Sacred Heart Prep, San Mateo, Sequoia, Junipero Serra High, So. San Francisco, Terra Nova, West Bay Christian Academy, Westmoor, Woodside, Woodside Priory Cabrillo CCD: Aptos, Harbor High, Monte Vista Christian, Mt. Madonna, Pacific Collegiate, Pajaro Valley, San Lorenzo Valley, Santa Cruz, Scotts Valley, Soquel, St. Francis Central Coast, Watsonville Chabot-Las Positas CCD: Amador, Arroyo, Castro Valley, Del Valle, Dougherty Valley, Dublin, Foothill, Granada, Hayward, James Logan, Livermore, Moreau, Mt. Eden, Redwood Christian, San Leandro, San Lorenzo, Tennyson, Valley, Valley Christian, Village, Vineyard Foothill-De Anza CCD: Castilleja, Cupertino, Fremont, Henry M. Gunn, Homestead, Los Altos, Lynbrook, Monta Vista, Mt. View, Palo Alto, Pinewood, St. Francis, The Kings Academy Ohlone CCD: American, Irvington, Kennedy, Mission San Jose, Newark Memorial, Washington Peralta CCD: Alameda, Albany, Berkeley, Bishop O'Dowd, Emery, Encinal, Fremont Federation, Head Royce, Holy Names, St. Joseph's Notre Dame, McClymonds, Oakland, Oakland Tech, Piedmont, Skyline, St. Elizabeths, St. Mary's San Francisco CCD: Abraham, Archbishop Riordan, Balboa, Bridgmont, Burton, Convent of the Sacred Heart, Drew Prep, French American Intern't, Galileo Academy of Sci & Tec, George Washington, International Studies Acad., J Eugene McAteer, John O'Connell, Lick-Wilmerding, Lowell, Lycée Français, Thurgood Marshall, Mercy, Mission, Raoul Wallenberg Trad, Sacred Heart Cathedral, Saint Ignatius Prep, San Francisco Christian, San Francisco University, Urban, Voice of Pentecost Academy, Waldorf West Valley-Mission CCD: Adrian Wilcox, Archbishop Mitty, Branham, Del Mar, Harker, Leigh, Los Gatos, North Valley Baptist, Prospect, Santa Clara, Saratoga, St. Lawrence Academy, Westmont</p>	

• Out of State Waivers for Recruitment

Approved for Redefinition

* Reinstatement



4.3 CONDITIONS FOR CONTESTS (Adopted 4/3/09 effective 7/1/09)

- 4.3.1 College representatives may photograph by still, motion, video tape, or film methods any game, meet or match in which any CCCAA school is participating. (Adopted 4/2/15 & effective 7/1/15)
- 4.3.2 There shall be a licensed physician present and prepared to administer medical care at all California community college football games. No football game shall begin without a licensed physician present.
- 4.3.3 CCCAAsports.org is the official website for collecting schedules, rosters, results, and statistics for all team sports sponsored by the CCCAA as defined in Bylaw 3.7. All California community colleges fielding athletic teams are required to update information on this website in a timely manner. Required timelines for inputting schedule information onto the statewide statistical website are: August 15 for fall sport schedules, October 20 for basketball, and January 15 for spring sports. Additionally, numerical rosters must be posted at least one (1) day prior to the first game, and results with complete and accurate individual statistics must be posted in accordance with sport specific guidelines, but not later than two (2) working days after the completion of the contest or tournament. (Adopted 3/28/13 effective 7/1/13) (Revised & effective 8/27/14)
- 4.3.3.1 Complete and accurate individual statistics (Bylaw 4.3.3) for all team sports sponsored by the CCCAA (Bylaw 3.7) is defined as: (Adopted 4/1/21 & effective 7/1/21)
- **Baseball:** Use StatCrew/NCAA Approved Stats Program (Play-by-Play) or PrestoSports Live Stats Entry.
 - **Basketball:** Upload a StatCrew/NCAA Approved Stats Program (Play-by-Play) file or use PrestoSports Live Stats or for manual entry: starters, participation, full NCAA box score (FGM-FGA, 3PM-3PA, FTM-FTA, OREB, DREB, AST, STL, BLK, TO, PF, Team REB, Deadball REB), (minutes optional), technical fouls, points by half (Men), points by quarter (Women).
 - **Football:** Use StatCrew/NCAA Approved Stats Program (Play-by-Play) or PrestoSports Live Stats Entry and the tracking of individual participation.
 - **Soccer:** Upload a StatCrew/NCAA Approved Stats Program (Play-by-Play) file or use PrestoSports Live Stats or for manual entry: starters, participation, goals, time of goals scored, assists, shots, GK minutes, GK goals allowed, saves, shots on goal, yellow cards, red cards, time of cards issued, PK attempts and PK's made, (fouls optional).
 - **Softball:** Use StatCrew/NCAA Approved Stats Program (Play-by-Play) or PrestoSports Live Stats Entry.
 - **Volleyball:** Use StatCrew/NCAA Approved Stats Program (Play-by-Play) file or use PrestoSports Live Stats or for manual entry: starters, participation, team set scores (kills, errors, total attacks), sets played, setting assists, attack attempts, kills, attack errors, digs, solo blocks, block assists and aces.
 - **Water Polo:** Using PrestoSports Manual Entry: starters, participation, goals and assists (with times), shots, saves, quarters played by goalies.
- 4.3.4 When a home team's qualified statistician is present at an event and using either StatCrew or the PrestoSports stats software, the home team's staff will be official for both teams. The home team statistician should make every effort to compare stats with the visiting team, but in the case of a discrepancy in which a reasonable solution can't be reached, the home team ruling will stand. In the event a visiting team can provide ample evidence of negligence by the home team's statistician, a conference and/or single-sport sports information professional, or the CCCAA Director of Sports Information and Communications shall have the ability to step in and make necessary changes. (Adopted 3/30/17 effective 7/1/17)

Office Assistant II



Building 1 at Cañada College
4200 Farm Hill Blvd.
Redwood City, CA 94061

The 116,00 square-foot Kinesiology & Wellness Building is a teaching and learning building aimed to expand academic offerings at Cañada College. The building enhances the Kinesiology, Athletics and Dance Division, while serving as an important community resource. The building was generously community-funded by Measure H.

Total Project Cost:
\$120,000,000

Construction Completion:
Spring 2021

Architect:
ELS Architecture and Urban Design

Design Build Contractor:
Blach Construction

LEED certification:
Targeting LEED Gold certification

GROUND LEVEL

- **Gymnasium**
 - NCAA competition volleyball court
 - NCAA competition basketball court
 - 2 basketball cross courts
- **Athletic Training Facility**
- **Dedicated Hall of Fame Wall**
- **Community Locker Rooms**
- **Intercollegiate Athletics Weight Room**
- **Student Locker Rooms**
- **Intercollegiate Team Rooms**
- **Dance Studios**
- **7-Lane Competition Swimming Pool**
- **Wellness Swimming Pool**
- **Academic Offices and Work Space**
- **Nursing Room**
- **Lobby Food Service**
- **Kids Gym**

SECOND LEVEL

- **Cardio/Strength Work Out Area**
- **Academic Classroom**
- **Fitness Lounge**
- **Trainer's Area**
- **Fitness Rooms & Studios:**
 - GEX fitness room
 - Mind Body Fitness Room
 - Cycling Room
 - Pilates Studio
 - Wellness Room
 - Nutrition Room
 - One vs. One Room
 - Touchdown Room

ROOF LEVEL

- **3-lane Running Track**
- **3-regulation Pickleball Courts**
- **Yoga Studio**



DANCE

ASSOCIATE IN ARTS (AA) DEGREE:

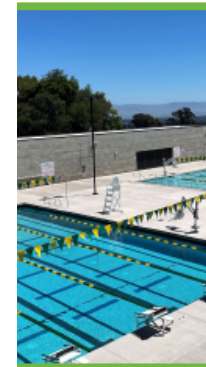
The Dance Program allows students to develop technical, aesthetic and artistic skills required to pursue a four-year dance degree. Courses offerings include:

Dance Appreciation | Contemporary Modern Dance
Jazz Dance | Ballet | Dance Performance
and Production | Salsa | Hip-Hop



CAÑADA COLLEGE INTERCOLLEGIATE ATHLETIC TEAMS

- **Baseball**
- **Men's Basketball**
- **Men's Soccer**
- **Women's Soccer**
- **Women's Tennis**
- **Women's Volleyball**



KINESIOLOGY

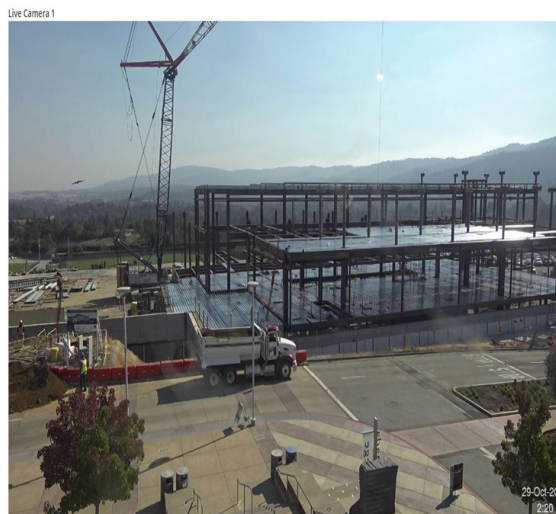
ASSOCIATE IN ARTS (AA/AA-T) DEGREE:

An associate degree in Kinesiology offers the foundation of the human movement field. Upon completion of the Associate in Arts degree or Associate degree for Transfer, students gain an understanding of how human movement can affect sports training and health. Course offerings include:

Introduction to Kinesiology | Stress Management
First Aid/Adult and Pediatric CPR/AED | Student Athletics-
Skills for Success | Swim Stroke Development Fitness-
Assessment | Strength and Conditioning
Total Body Burn | Core Strength and Functional Training
TRX Suspension Training | Boot Camp | Walking Fitness
Yoga | Pilates | Indoor Soccer

Highlights

- Investing in the organizational staffing structure of KAD ensures appropriate processes and programming are successfully impacting the diverse student population the division serves.
- Equip KAD with proportionate personnel required to manage B1
- B1 is the flagship building of SMCCCD
- Community facing
- Affirmed by Academic Senate (Resolution)



Thank You

Any Questions?

