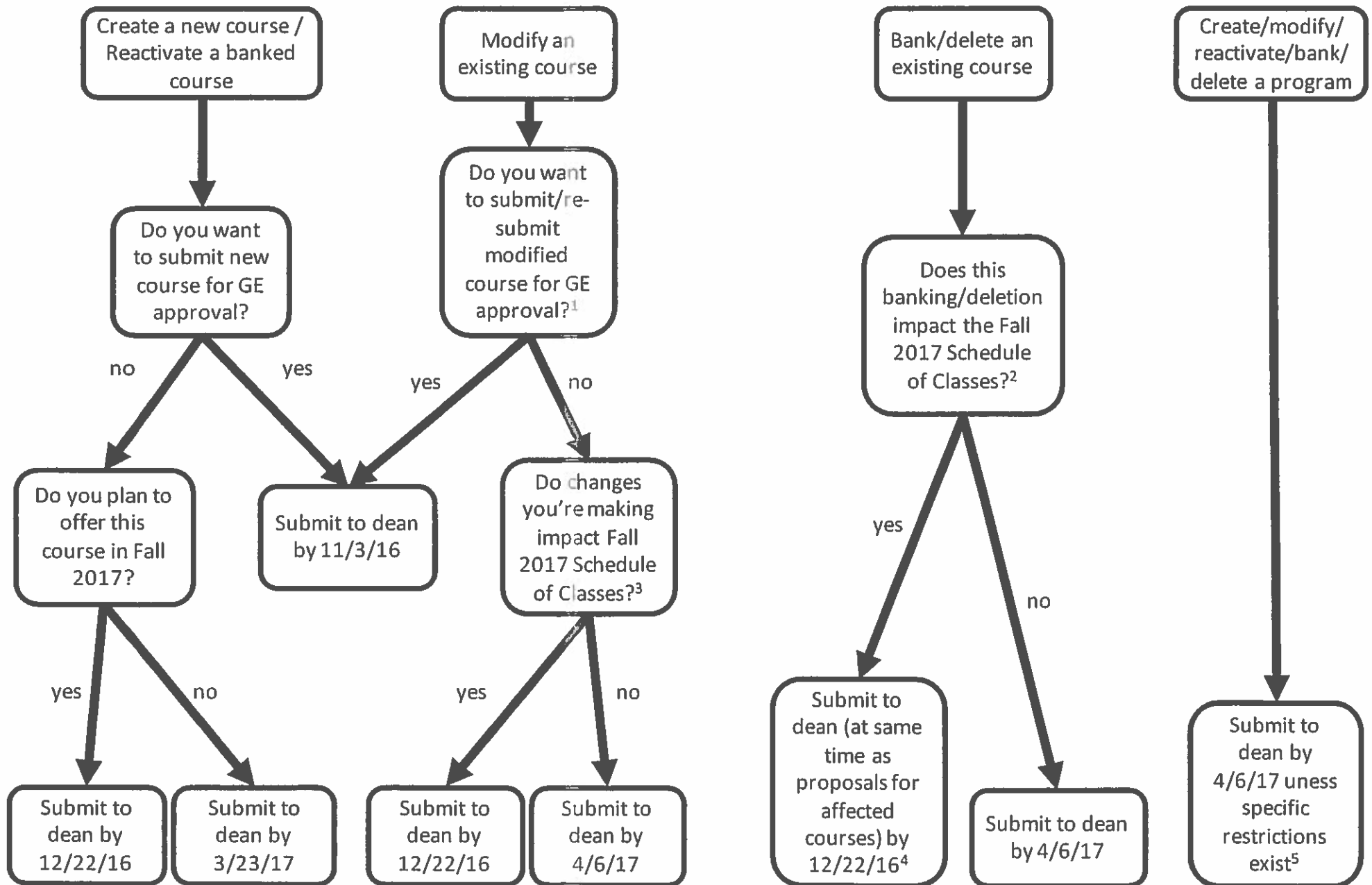


What is your quest?



Notes:

- ¹ If the following changes are made to a course that has already been approved for GE, then that course must be re-submitted for GE approval: decrease in hours/units, significant change in course content.
- ² For example, if the course being banked/deleted is a prerequisite, corequisite or recommended preparation for a course that will be offered in Fall 2017, this banking/deletion will impact the Fall 2017 Schedule of Classes.
- ³ Changes to the following impact the Fall Schedule of Classes: prerequisites/corequisites, course descriptions, grading method, materials fee charges, units/hours and recommended preparation.
- ⁴ As per Curriculum Committee procedure, any curriculum proposal that impacts other courses/programs must be submitted at the same time as the modification proposals to update the affected courses/programs.
- ⁵ Specific restrictions that may exist include submission deadlines specific to a particular Associate Degree for Transfer (ADT).