



Cañada College Disability Resources Center

# DRC enrollment data

SEPTEMBER 22ND, 2021

# Disability descriptions:

Disability Description	Fall 2019	Spring 2020	Fall 2020	Spring 2021	Grand Total	Percentage of disability type
Learning Disabled	87	71	78	44	280	32.1101
Mental Health Disability	58	48	45	52	203	23.2798
Other Disability	41	28	34	23	126	14.4495
ADHD-Att, Deficit Hyperac Diso	31	32	29	33	125	14.3349
Autism Spectrum	10	10	6	12	38	4.3578
Hearing Impaired	9	8	4	4	25	2.86697
Mobility Impaired	10	7	5	2	24	2.75229
Acquired Brain Injury	8	6	7	2	23	2.63761
Other Physical Disability	0	0	2	4	6	0.688073
Visually Impaired	1	2	0	3	6	0.688073
Intellectual Disability	2	1	1	0	4	0.458716
ADHD-Att, Deficit Hyperac Diso;Mental Health Disability	0	0	2	0	2	0.229358
ADHD-Att, Deficit Hyperac Diso;Mental Health Disability; ...	0	0	0	1	1	0.114679
ADHD-Att, Deficit Hyperac Diso;Other Disability	0	0	1	0	1	0.114679
Autism Spectrum;Learning Disabled	0	0	1	0	1	0.114679
Hearing Impaired;ADHD-Att, Deficit Hyperac Diso	0	0	0	1	1	0.114679
Hearing Impaired;Mental Health Disability	0	0	1	0	1	0.114679
Learning Disabled;ADHD-Att, Deficit Hyperac Diso	0	0	1	0	1	0.114679
Learning Disabled;Mental Health Disability;Other Disability	0	0	0	1	1	0.114679
Mental Health Disability;Other Disability	0	0	1	0	1	0.114679
Mobility Impaired;Other Physical Disability	0	0	0	1	1	0.114679
Other Physical Disability;Other Disability	0	0	1	0	1	0.114679

Among four semesters, Learning disabled, mental health disability, ADHD and Deficit Hyperac Disorder, and Autism are the most common disabilities in DRC.

Disability Description	Fall 2019	Spring 2020	Fall 2020	Spring 2021	Grand Total	Percentage of disability type
Grand Total	257	213	219	183	872	100
Learning Disabled	87	71	78	44	280	32.1101
Mental Health Disability	58	48	45	52	203	23.2798
Other Disability	41	28	34	23	126	14.4495
ADHD-Att, Deficit Hyperac Diso	31	32	29	33	125	14.3349
Autism Spectrum	10	10	6	12	38	4.3578
Hearing Impaired	9	8	4	4	25	2.86697
Mobility Impaired	10	7	5	2	24	2.75229
Acquired Brain Injury	8	6	7	2	23	2.63761
Other Physical Disability	0	0	2	4	6	0.688073
.. (13 rows omitted)						

# AB 705 Course Outcomes



Subject	Outcome	Fall 2018(%)	Spring 2019(%)	Fall 2019(%)	Spring 2020(%)	Fall 2020(%)
ENGL 100	Retention	71	Not applied	94	100	100
ENGL 100	Success	58	Not applied	61	50	75
ENGL 105	Retention	Not applied	Not applied	67	67	100
ENGL 105	Success	No applied	Not applied	56	33	60
MATH 200	Retention	84	94	76	80	96
MATH 200	Success	73	78	61	60	59
MATH 200 + 800	Retention	Not applied	Not applied	69	100	100
MATH 200 + 800	Success	No applied	Not applied	62	57	43
MATH 190	Retention	88	100	100	100	100
MATH 190	Success	50	54	83	67	75
MATH 225	Retention	88	100	82	100	100
MATH 225	Success	75	75	65	80	55
MATH 241	Retention	100	67	100	100	100
MATH 241	Success	71	33	100	47	67

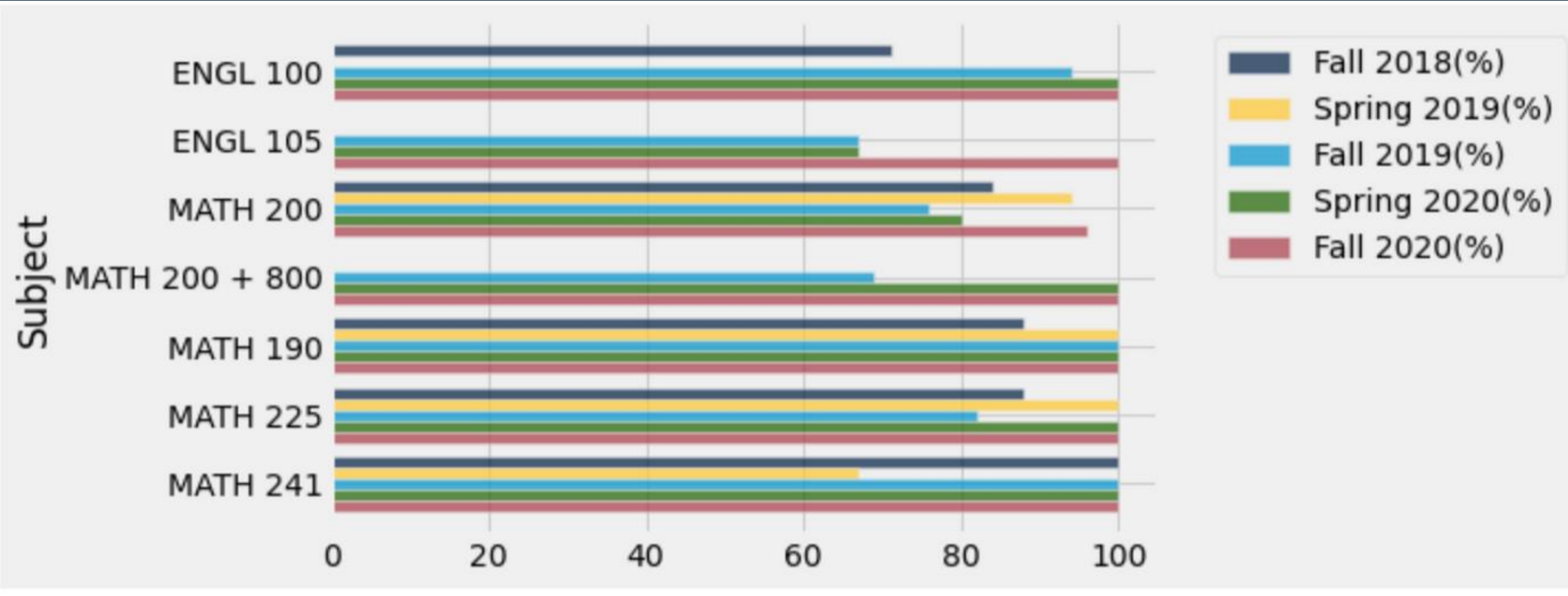


# Retention rate:



Among four semesters, the retention rates of the classes above generally increased.

Subject	Outcome	Fall 2018(%)	Spring 2019(%)	Fall 2019(%)	Spring 2020(%)	Fall 2020(%)
ENGL 100	Retention	71	0	94	100	100
ENGL 105	Retention	0	0	67	67	100
MATH 200	Retention	84	94	76	80	96
MATH 200 + 800	Retention	0	0	69	100	100
MATH 190	Retention	88	100	100	100	100
MATH 225	Retention	88	100	82	100	100
MATH 241	Retention	100	67	100	100	100

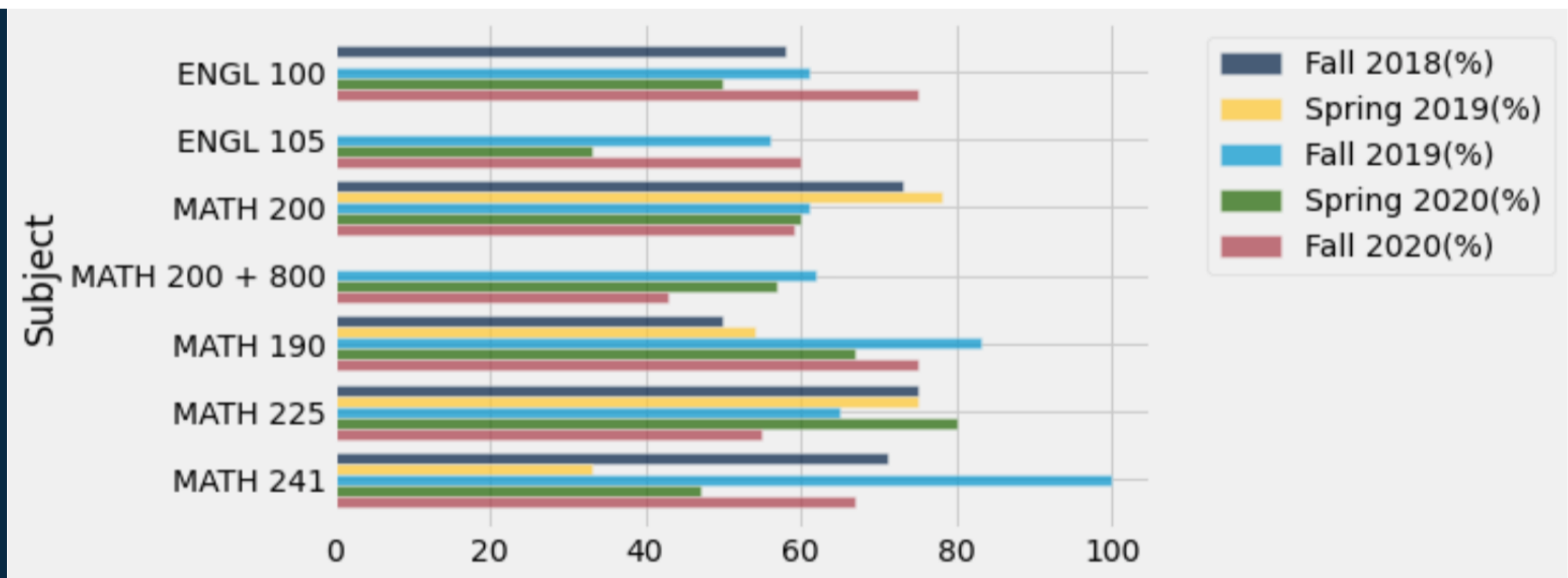


# Success rate:



Compared to classes that provide additional academic support (Math200+ 800 and ENGL 105), classes that don't gained higher success rates.

Subject	Outcome	Fall 2018(%)	Spring 2019(%)	Fall 2019(%)	Spring 2020(%)	Fall 2020(%)
ENGL 100	Success	58	0	61	50	75
ENGL 105	Success	0	0	56	33	60
MATH 200	Success	73	78	61	60	59
MATH 200 + 800	Success	0	0	62	57	43
MATH 190	Success	50	54	83	67	75
MATH 225	Success	75	75	65	80	55
MATH 241	Success	71	33	100	47	67



# Place guidelines based in GPA

- **\*For English:**

group	HS GPA	Placement English
1	less than 1.9	ENGL 105
2	between 1.9 and 2.6	ENGL 105
3	greater than or equal to 2.6	ENGL 100

Notes: ENGL 105 is a comparable course of ENGL 100 but includes additional academic and concurrent support

- **\*For SLAM:**

group	HS GPA	Placement SLAM
1	greater than 3.0	MATH 145, 200, 201
2	between 2.3 and 2.9	MATH 200 + 800
3	less than 2.3	MATH 200 + 800

Notes: Math 200 + Math 800 includes additional academic and concurrent support

# Place guidelines based in GPA

• \*For BSTEM:

group	HS GPA	Placement SLAM
1	$\geq 3.4$	MATH 125, 130, 150, 225, 241
1	$\geq 2.6$ & previously enrolled in a HS Calculus Course	MATH 125, 130, 150, 225, 241
2	$\geq 2.6$	MATH 130 + 830 or MATH 225 + 825 or MATH 241 + 841
2	Preciously enrolled in a HS Pre-Calculus course	MATH 130 + 830 or MATH 225 + 825 or MATH 241 + 841
3	$\leq 2.6$ and no previous Pre-Calculus	MATH 130 + 830 or MATH 225 + 825 or MATH 241 + 841

Notes:MATH 130 + 830; MATH 225 + 820; MATH 241 + 841 includes additional academic and concurrent support



# Placement in English-highest band:

HS GPA Band	Placement	Note	student count
Highest Band	ENGL 100	OVERRIDE CRSE EQUIV	4
Highest Band	ENGL 110/165	OVERRIDE CRSE EQUIV	1
Highest Band	ENGL 801/826	N/A	1
Highest Band	ENGL 100	N/A	56
Highest Band	ENGL 105	N/A	4
Highest Band	ENGL 105	Override	1
Highest Band	ENGL 110/165	AP-ENGL	2
Highest Band	ENGL 838, ENGL 846, ENGL 847	N/A	2
Highest Band	ENGL 847	Override	1
Highest Band	ENGL 100 Honors	N/A	1
Highest Band	ENGL 838	N/A	1
Highest Band	MMP HS: ENGL 100 PLACEMENT	N/A	23
Highest Band	(blank)	N/A	6

# Placement in English-lowest band:

HS GPA Band	Placement	Note	student count
Lowest Band	ENGL 100	OVERRIDE CHALLENGE	1
Lowest Band	ENGL 100	N/A	2
Lowest Band	ENGL 105	N/A	1
Lowest Band	ENGL 847	Override	1
Lowest Band	MMP HS: ENGL 100 PLACEMENT	N/A	1

# Placement in English-mid band:

HS GPA Band	Placement	Note	student count
Mid Band	ENGL 100	OVERRIDE CHALLENGE	1
Mid Band	ENGL 100	OVERRIDE CRSE EQUIV	1
Mid Band	ENGL 100	N/A	7
Mid Band	ENGL 105	N/A	12
Mid Band	ENGL 105	Override	1
Mid Band	ENGL 828, ENGL 827	N/A	2
Mid Band	ENGL 838, ENGL 846, ENGL 847	N/A	2
Mid Band	ENGL 847	Override	1
Mid Band	MMP HS: ENGL 100 PLACEMENT	N/A	3

# Placement in SLAM:

HS GPA Availability IND	Y
<b>HS GPA - Placement</b>	<b>Student Count</b>
<b>Highest Band</b>	<b>80</b>
EN 100 - OVERRIDE CRSE EQUIV	2
EN 110/165 OVERRIDE CRSE EQUIV	1
EN 801/826	1
ENGL 100	45
ENGL 105	2
ENGL 105 Override	1
ENGL 110,165 AP-ENGL	2
ENGL 838, ENGL 846, ENGL 847	2
ENGLISH 100	1
English 100 Honors	1
MMP HS: ENGL 100 PLACEMENT	17
(blank)	5
<b>Lowest Band</b>	<b>15</b>
EN 100 - OVERRIDE CHALLENGE	2
ENGL 100	3
ENGL 105	6
ENGL 838, ENGL 846, ENGL 847	1
ENGL 847 Override	1
MMP HS: ENGL 100 PLACEMENT	2
<b>Mid Band</b>	<b>44</b>
EN 100 - OVERRIDE CRSE EQUIV	3
ENGL 100	15
ENGL 105	9
ENGL 105 Override	1
ENGL 828, ENGL 827	2
ENGL 838, ENGL 846, ENGL 847	1
ENGL 847 Override	2
ENGLISH 100	1
English 838	1
MMP HS: ENGL 100 PLACEMENT	8
(blank)	1
<b>Grand Total</b>	<b>139</b>



Thank you!