



OVERVIEW OF DRC SERVICES
FOR STEM TEAM
(MARCH 18, 2021)



PRESENTED BY:

BETTINA LEE, DIRECTOR OF DRC

JENNA FRENCH, DRC COUNSELOR & LD SPECIALIST

CELESTE KIDD, ALT-MEDIA INSTRUCTIONAL AIDE

AGENDA

DRC SERVICES

CONFIDENTIALITY

WELLNESS CENTER RESOURCES

DRC TRAININGS FOR STUDENT EMPLOYEES

CARES TEAM AND THE DRC

Q & A'S



BEFORE WE GET STARTED, THIS IS US.

Front
Office

DRC
Counselors

Alternative
Media

DRCSA



1

DRC SERVICES

Q: What services do you provide?

ALTERNATIVE MEDIA

TECHNOLOGY-BASED ACCOMMODATIONS

- X Speech to Text to speech for reading
- X Speech to text for writing
- X Note taking assistance for listening

USING ALTERNATIVE MEDIA FOR EXAMS

- X Exams proctored by DRC via Zoom
- X Exams are recorded
- X Assistive technology can be used on exams.

MISCELLANEOUS SUPPORT

TECH SUPPORT

- X Zoom Tips & Tricks
- X Navigating Windows OS
- X Microsoft Office
- X Navigating the Internet
- X Navigating Windows OS

EXECUTIVE FUNCTIONING

- X Creating a comfortable workspace
- X Planning & Prioritization of assignments
- X Organizing materials and notes
- X Creating schedules for work and leisure

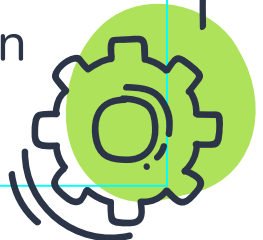
COUNSELING SERVICES

Academic:

- X Add/drop classes
- X Student Ed Plans
- X Corresponding with Admissions and Records on behalf of students
- X Discuss college's academic policies and procedures
- X Transfer planning
- X Degree planning
- X Referrals to various resources and programs on campus.

Accommodations:

- X Consults
- X Intakes
- X Talking to professors regarding accommodations
- X Study Strategies
- X Course Substitution



LEARNING DISABILITY TESTING PROCEDURES DURING COVID 19

Q: What is the status of LD disability assessment and are they taking referrals (especially online)?

APPLICATION AND LD PACKET

INTERVIEW

TEMPORARY ACCOMMODATIONS

Students can access both the DRC application and LD (Learning Disability) Packet on our “Forms” page.

The interview is how we screen students to see if they qualify to get an LD assessment. This interview can consist of any of the following:

- Educational goals/difficulties
- Review of medical history
- School history
- Work history
- Family history

If an LD assessment does not seem to be the next best step, we suggest a referral

If students are found eligible for an LD assessment they will be given temporary accommodations and placed on a waitlist until campus reopens.



DISABILITY RESOURCE CENTER STUDENT AMBASSADOR INITIATIVE

DRCSA:

New student club that is here to support students with disabilities, and educating faculty and staff on how to better support students with disabilities.

- X ESL Study Groups
- X Mentoring
- X Specialized Tutoring
- X Workshops
 - X Wellness Fair presentation on April 13th
 - X FLEX Day presentation on April 22





2

CONFIDENTIALITY

Q: Student privacy issues when it comes to the DRC?



Q: Sending email about a student that doesn't violate privacy laws?

- Do NOT use students' names in the subject line. Instead use student initials or G number.
- Do NOT cc, forward, or write emails to colleagues regarding a student's disability information if you are not sure that they have a "right to know".
- Do NOT write anything in the message of the email that can be used against you in the court of law.



Q: How in our department should we communicate about students who receive DRC services?

Firstly, you cannot let anyone in your department know about a student's affiliation with the DRC without the student's permission OR if your colleague has a right to know (ex: They are the designated proctor in the department, Dean, TA in class).

Secondly, if the person has the right to know, make sure you communicate discreetly (where no one can hear you, use initials in emails or text messages).



Q: Can we share within our
success team?

No.



3

OTHER
WELLNESS CENTER
RESOURCES

THE HEALTH CENTER

Q: How do students access the doctor? Will this enhance services for students?

- The easiest way to get an appointment is through canhealth@smccd.edu.
 - Make sure students leave a contact number and G number.
- They will see a healthcare provider(nurse practitioner, nurse) not necessarily a doctor.
 - Dr. Wong would only see someone who is complicated.
- Our services have been enhanced because we can write prescriptions, send students to get labs, etc.

PERSONAL COUNSELING CENTER

Q: What are the steps if we are meeting with a student in distress (especially after hours)?

During Office hours:

- Text or call PCC phone right away during business hours and we'll see if one of our counselors is available for a drop in.
- If no one is available, we can help connect them to one of our 24/7 therapists through *Cañada TalkNow*.
- *Please also fill out a referral form on our website so we can keep a record of your referral*

Outside our office hours:

- Please direct students to call one of the 24 hour hotlines listed on our website if it is a crisis situation or call 911.
- If it is not a crisis situation but still urgent, please have them access one of the 24/7 therapists through *Cañada TalkNow*.
- *Please also fill out a referral form on our website so we can keep a record of your referral*

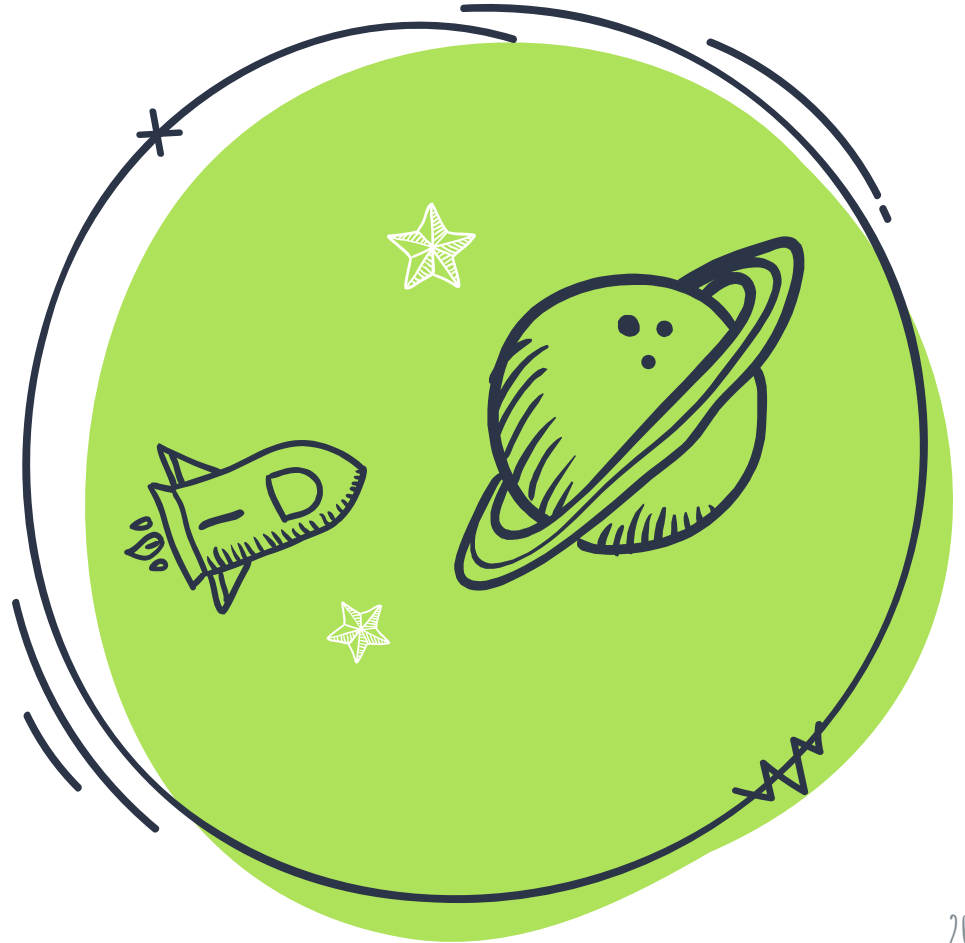


4

DRC TRAININGS FOR
STUDENT EMPLOYEES

TRAINING FOR PEER MENTORS

- X Building trust with your mentees (ex: must show vulnerability, practice patience, do research, best methods of communication, role modeling, etc).
- X Ethical responsibilities when working with students with disabilities (ex: people first language, confidentiality, etc)
- X How to best deal with difficult mentoring situations.





5

CARES TEAM AND THE
WELLNESS CENTER

Q: How does the DRC interact with the CARES team? Are they always involved with the CARES team?

CARES

Yes

THANKS!

Any more
questions?

