



SAN MATEO COUNTY  
**COMMUNITY**  
COLLEGE DISTRICT



# Cañada College B1N New Kinesiology and Wellness

## Faculty and Staff Update

---

OCTOBER 12, 2016

# Agenda

---

- Introduction
- Where We've Been
- Where We Are
- Where We're Going
- Questions



# Where We've Been- High Level

---

- BCA Architects Selected in 2013
  - Initial programming and schematic design
- Lease-Leaseback (LLB) Delivery Method Selection 2014
- California Supreme Court Ruling July 2015 – LLB
- Other Alternative Delivery Method Evaluation August 2015 to February 2016
- Design-Build Delivery Method Selected February 2016
- Request for Statements of Qualifications Issued May 2016
- Request for Proposals Issued June 2016
- Board of Trustees Approved Contract Award September 2016
- Design Concept October 2016
- Program Validation Resumes November 2016

# Where We've Been-Staff and Faculty

---

## Programming and Design Meeting Dates

- 10/21/2013- Programming Meeting –Cañada Faculty
- 01/31/2014- Programming Meeting –Cañada Faculty and Enterprise
- 09/29/2014- Conceptual Design Presentation –Cañada Faculty
- 3/13/2015- Schematic Design Update –Cañada Faculty
- 10/22/2015- BCA Presentation of Schematic Design to Cañada Faculty
- 11/6/2015- Facilities CIP 3 Program Update and Forum with Cañada Faculty and Staff
- 5/9/2016- Review of BCA Locker Room Options with Cañada Faculty



# BCA Programming Matrix

## Canada College Center for Kinesiology and Human Performance- Perferred Program

LOCKER ROOM- FEMALE	NUMBER OF STATIONS	REQUIRED SPACE / STATION (SF)	Square Feet (SF)
<b>Enterprise Program (150)</b>			
Showers with no changing sation (changing space +50%)	10	40	396
Water Closets	8	35	277
Sinks	6	25	149
Dry Grooming (36" linear each)	8	12	99
Locker Frames w/ interior bench (80% 1-door, 20% 2-door)	150	8	1,200
Changing Rooms	3	20	59
Towel Distribution / Collection Millwork	2	40	80
<b>Academic Program- Cañada College</b>			
<b>Student (50)</b>			
Showers with no changing sation (changing space +50%)	3	40	120
Water Closets	3	35	105
Sinks	3	25	75
Dry Grooming (36" linear each)	2	12	24
Locker Frames w/ interior bench (80% 1-door, 20% 2-door)	50	8	400
Changing Rooms	1	20	20
Towel Distribution / Collection Millwork	1	40	40
Team Room	35	10	350
<b>Staff (10)</b>			
Showers with no changing sation (changing space +50%)	2	40	80
Water Closets	2	35	70
Sinks	2	25	50
Dry Grooming (36" linear each)	1	12	12
Locker Frames w/ interior bench (80% 1-door, 20% 2-door)	10	8	80
Changing Rooms	2	20	40
Towel Distribution / Collection Millwork	1	40	40
		<b>Female LR Size (SF)</b>	<b>3,766</b>
<b>TOTAL SPACE (SF)</b>			<b>110,650</b>
<b>TOTAL CIRCULATION (SF)</b>			<b>14,963</b>
<b>TOTAL INTERIOR SPACE WITH CIRCULATION (SF)</b>			<b>125,613</b>

GRAND TOTAL (SF) 125,613

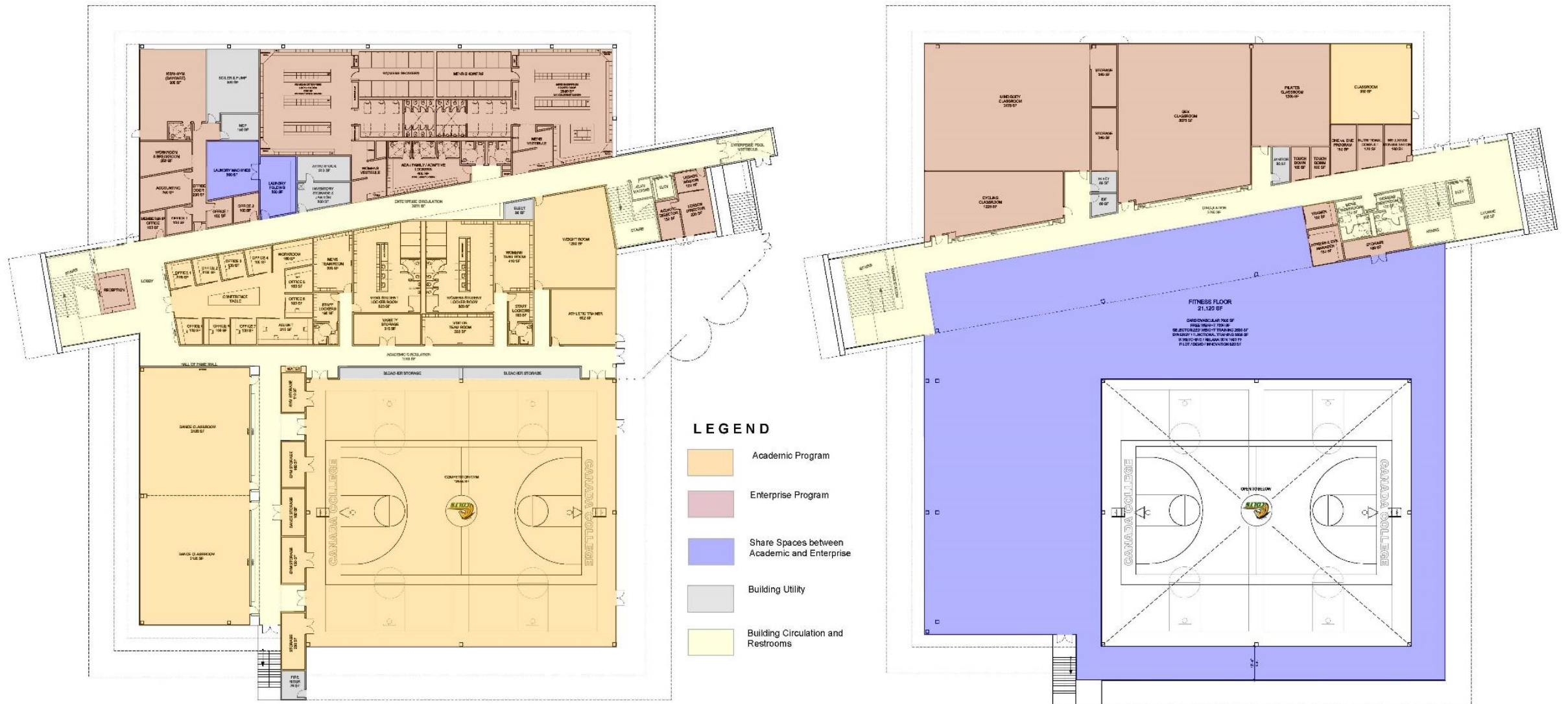
## Canada College Center for Kinesiology and Human Performance- Integrated Program

LOCKER ROOM- FEMALE	NUMBER OF STATIONS	SPACE / STATION (SF)	Square Feet (SF)
<b>Enterprise Program (150)</b>			
Showers with no changing sation (changing space +50%)	10	40	396
Water Closets	8	35	277
Sinks	6	25	149
Dry Grooming (36" linear each)	8	12	99
Locker Frames w/ interior bench (80% 1-door, 20% 2-door)	150	8	1,200
Changing Rooms	3	20	59
Towel Distribution / Collection Millwork	2	40	80
<b>Academic Program- Cañada College</b>			
<b>Student (50)</b>			
Showers with no changing sation (changing space +50%)	3	40	120
Water Closets	3	35	105
Sinks	3	25	75
Dry Grooming (36" linear each)	2	12	24
Locker Frames w/ interior bench (80% 1-door, 20% 2-door)	50	8	400
Changing Rooms	1	20	20
Towel Distribution / Collection Millwork	-	40	-
Team Room	35	10	350
<b>Staff (5)</b>			
Showers with no changing sation (changing space +50%)	2	40	40
Water Closets	2	35	35
Sinks	2	25	25
Dry Grooming (36" linear each)	1	12	12
Locker Frames w/ interior bench (80% 1-door, 20% 2-door)	10	8	40
Changing Rooms	2	20	20
Towel Distribution / Collection Millwork	0	40	-
		<b>Female LR Size (SF)</b>	<b>3,526</b>
<b>TOTAL SPACE (SF)</b>			<b>62,139</b>
<b>TOTAL CIRCULATION (SF)</b>			<b>8,993</b>
<b>TOTAL INTERIOR SPACE WITH CIRCULATION (SF)</b>			<b>71,132</b>

GRAND TOTAL 71,132



# March 2015 Schematic Design



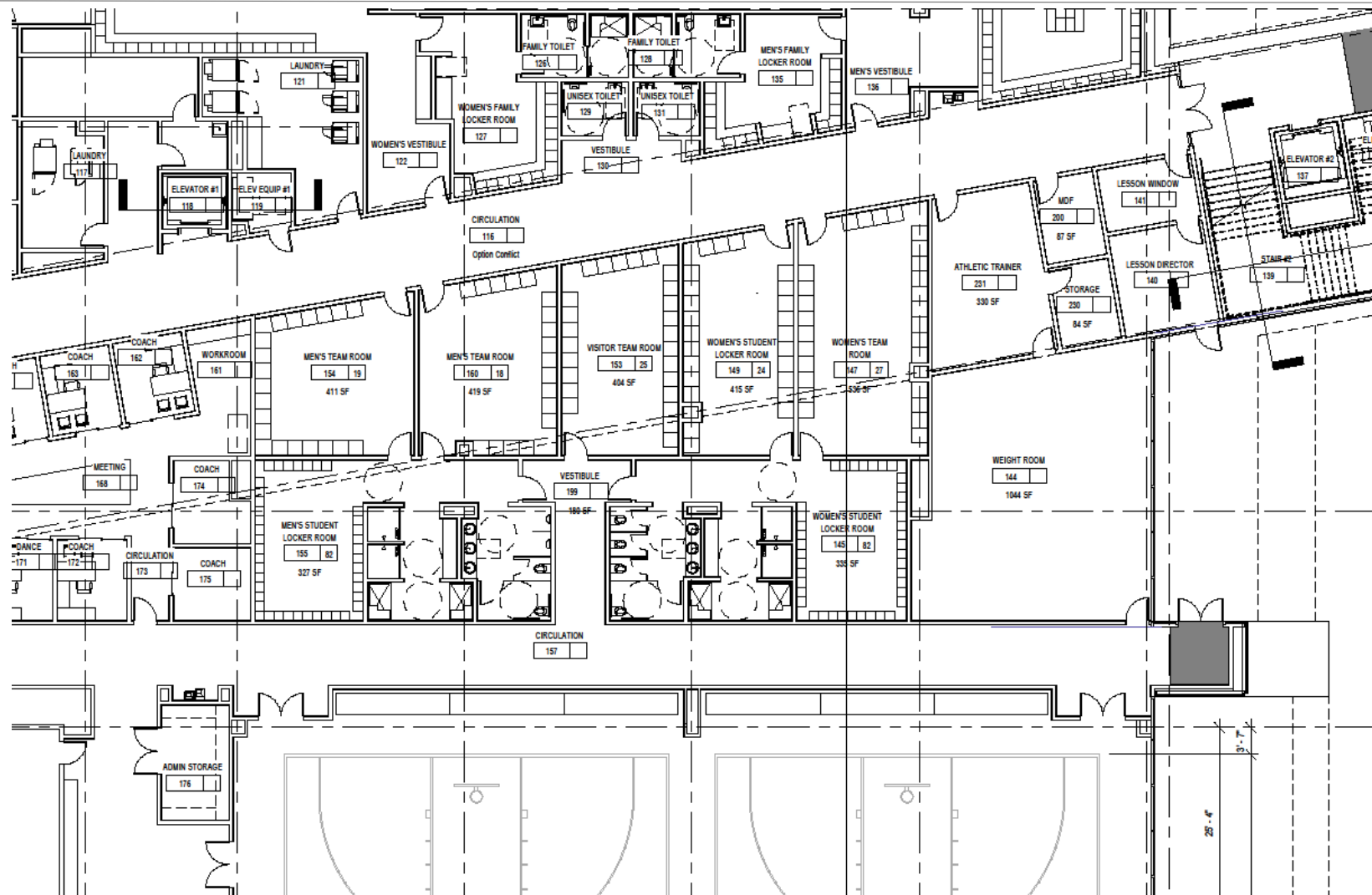


# Schematic Design Rendering

---



# Team Room Layout- Option 2



# Design Build Procurement Process

---

**Two Step  
"Best Value"**  
Qualifications + Cost



**Request for Statement  
of Qualifications**



**Request for Proposals**

- Employs evaluation criteria traditionally used for qualifications-based selection along with a prequalification questionnaire based on the Department of Industrial Relations' guidelines
- Allows for a larger pool of qualified firms to participate
- Three highest ranked Design-Build Entities are invited to participate
- Employs objective evaluation criteria as required per Education Code 81700; price, technical expertise, life cycle costs, skilled labor force availability, and acceptable safety record
- Allows for price or costs to be considered with qualifications

# Cañada B1N Kinesiology and Wellness DBE Selection Team

---

## District Representatives

- **José D. Nuñez**, Vice Chancellor, Facilities Planning, Maintenance & Operations
- **Chris Strugar-Fritsch**, Director of Capital Projects
- **Yanely Pulido**, Contracts Manager
- **Joe Fullerton**, Energy and Sustainability Manager

## Campus Representatives

- **Jamillah Moore**, President
- **Michelle Marquez**, Vice President, Administrative Services
- **Karen Pinkham**, Interim Facilities Manager

## Construction Management

- **Anne Daley**, Swinerton Management & Consulting, Program Director
- **Greg Cheifetz**, Swinerton Management & Consulting, Campus Construction Manager

# RFSOQ Selection Process Schedule

Milestone	Date
RFSOQ Invitation Issued:	Monday, May 2, 2016
Mandatory Pre-Qualification Conference:	Tuesday, May 10 and Thursday, May 12, 2016
Last Day for Written RFI's:	Friday, May 20, 2016
Last Day to Issue Addenda:	Wednesday, May 25, 2016
Statement of Qualifications Due at District Office:	Thursday, June 2, 2016 between 12:00 p.m. and 2:00 p.m. sharp.
Issue RFP to Short List:	Monday, June 20, 2016
Interviews Held:	Week of August 1, 2016
Issue Notice of Intent to Award:	Tuesday, September 6, 2016
SMCCCD Board of Trustees Meeting (anticipated contract approval):	Wednesday, September 28, 2016
Issue Notice of Award:	Thursday, September 29, 2016
District Issues Notice to Proceed Letter:	October 2016



# Cañada B1N Kinesiology and Wellness SOQ Master Evaluation Matrix

## MASTER EVALUATION: RFSOQ # 86730 CAÑ B1 Kinesiology and Wellness/Aquatics Center Project

Evaluation Criteria - as stated in the RFSOQ	Max Score	DBE 1 - DPR/LPAS						DBE 2 - Blach/ELS						DBE 3 - Sundt/LPA Inc						DBE 4 - McCarthy/Kwan Henmi						DBE 5 - Hunt/Gensler						DBE 6 - Turner/KMD						DBE 7 - Lendlease/HOK					
		r1	r2	r3	r4	r5	Average Reviewer Scores	r1	r2	r3	r4	r5	Average Reviewer Scores	r1	r2	r3	r4	r5	Average Reviewer Scores	r1	r2	r3	r4	r5	Average Reviewer Scores	r1	r2	r3	r4	r5	Average Reviewer Scores	r1	r2	r3	r4	r5	Average Reviewer Scores						
Basic Information	Not Scored																																										
Prequalification Questionnaire (Attach 1)	Pass/Fail	PASS																																									
Key Personnel	100	90	100	90	98	95	94.6	90	100	90	95	95	94.0	80	100	95	90	95	92.0	70	100	85	90	90	87.0	65	70	95	95	85	82.0	65	90	90	85	80	82.0	65	80	85	80	80	78.0
DB Project Experience	100	100	100	95	90	100	97.0	85	80	95	90	85	87.0	75	80	95	95	85	86.0	70	70	95	80	75	78.0	80	70	95	90	85	84.0	90	80	90	85	80	85.0	80	80	95	85	85	85.0
CA School Project Experience	100	95	100	100	100	100	99.0	85	90	100	100	95	94.0	70	80	100	100	95	89.0	80	100	100	100	100	96.0	90	100	100	100	95	97.0	80	80	100	90	90	88.0	85	50	100	50	50	67.0
DSA Experience	100	95	100	100	100	100	99.0	95	100	100	100	100	99.0	85	100	100	100	95	96.0	90	100	100	100	90	96.0	80	90	100	100	90	92.0	85	90	100	100	90	93.0	55	40	100	90	80	73.0
Project Specific Requirements	100	85	100	100	100	100	97.0	100	100	100	98	100	99.6	95	80	100	100	90	93.0	90	90	100	100	95	95.0	80	90	100	95	85	90.0	60	80	100	100	85	85.0	80	90	100	95	90	91.0
Schedule	50	40	50	50	50	45	47.0	40	40	50	50	40	44.0	45	50	50	50	50	49.0	40	35	50	50	45	44.0	15	30	50	50	40	37.0	45	40	50	50	45	46.0	40	40	50	45	40	43.0
Applicant's Unique Quals	50	50	50	50	50	50	50.0	45	45	50	50	50	48.0	35	50	50	50	50	47.0	30	40	40	50	50	42.0	35	40	50	50	40	43.0	45	45	50	45	45	46.0	40	40	50	45	40	43.0
Applicant's Strategies	50	40	25	50	50	40	41.0	40	45	50	50	50	47.0	35	40	50	50	45	44.0	35	50	50	50	50	47.0	30	50	50	50	50	46.0	40	45	50	50	45	46.0	35	10	50	50	40	37.0
Response was clear, concise and responsive	25	20	20	25	25	20	22.0	25	20	25	25	25	24.0	20	20	25	25	25	23.0	15	5	25	25	20	18.0	20	20	25	25	20	22.0	15	25	25	25	20	22.0	20	20	25	25	15	21.0
Score TOTALS	675	615	645	660	663	650	647	605	620	660	658	640	637	540	600	665	660	630	619	520	590	645	645	615	603	495	560	665	655	590	593	525	575	655	630	580	593	500	450	655	565	520	538

\*RFSOQ Section 6 – The three highest ranked firms who confirm their willingness and ability to continue in the process will receive the RFP.

# RFP Selection Process Schedule

Milestone	Date
Issue RFP to Short List:	Monday, June 20, 2016
Pre-Proposal Mandatory Conference:	Thursday, June 30, 2016 at 9:00AM
Confidential Meetings:	Thursday, July 14: Sundt 8:00AM, DPR 1:30PM; Friday, July 15: Blach 8:00AM Thursday, July 21: 1:00 to 5:00 PM
Last Day to submit questions about RFP:	Wednesday, July 20, 2016
Final RFP Addendum issued:	Friday, July 22, 2016
Design-Build Proposals due at District Office:	Friday, July 29, 2016 between 12:00PM and 2:00PM
Proposing firms interviewed:	Thursday, August 4, 2016
Best and Final Offers Due:	Monday, August 8, 2016
Notice of Intent to Award:	Tuesday, August 9, 2016
Board Information Briefing:	Wednesday, August 24, 2016
Board Approval:	Wednesday, September 14, 2016

# RFP Master Evaluation Matrix – Total Proposal Scores

**MASTER EVALUATION SUMMARY: RFP 86730**  
**CAÑADA BUILDING 1, NEW KINESIOLOGY AND WELLNESS BUILDING AND AQUATICS CENTER PROJECT**

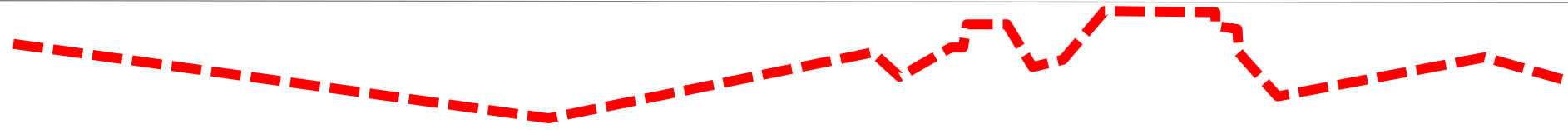
Evaluation Criteria (As stated in the RFP)	Max Score	DBE 1 - BLACH / ELS		DBE 2 - SUNDT / LPA		DBE 3 - DPR / LPAS	
			Scores		Scores		Scores
Technical Proposal	65		60		57		41
Fee Proposal	30		30.0		30.0		29.6
<b>Proposal Score TOTALS</b>	<b>95</b>		<b>89.7</b>		<b>86.6</b>		<b>70.9</b>

*\*RFP Section 9.12 – The winner will be the Proposer with the highest combined technical and fee scores.*



---

# Where We Are



RIDGELINE VIEWS

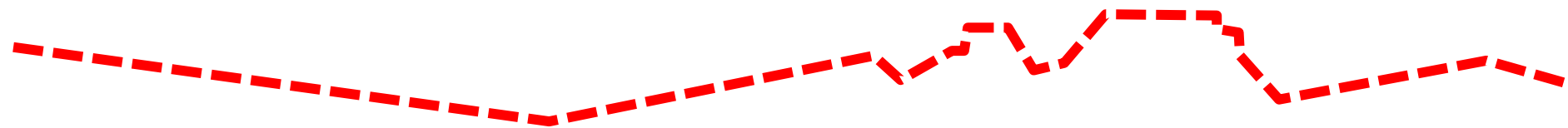
SUN HAT

ROOF?

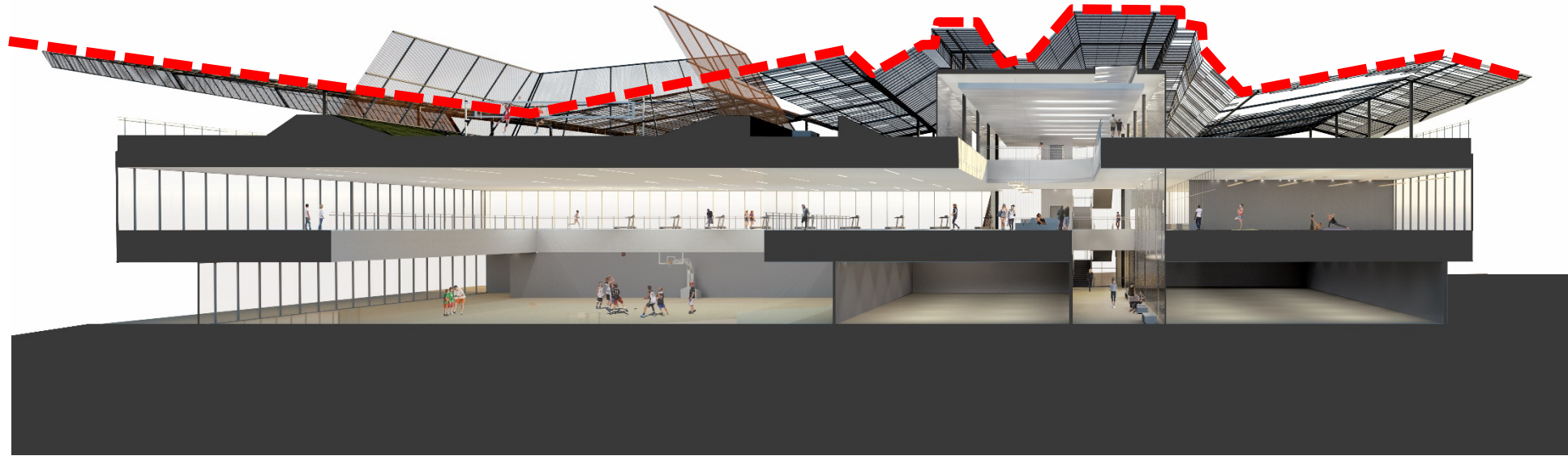




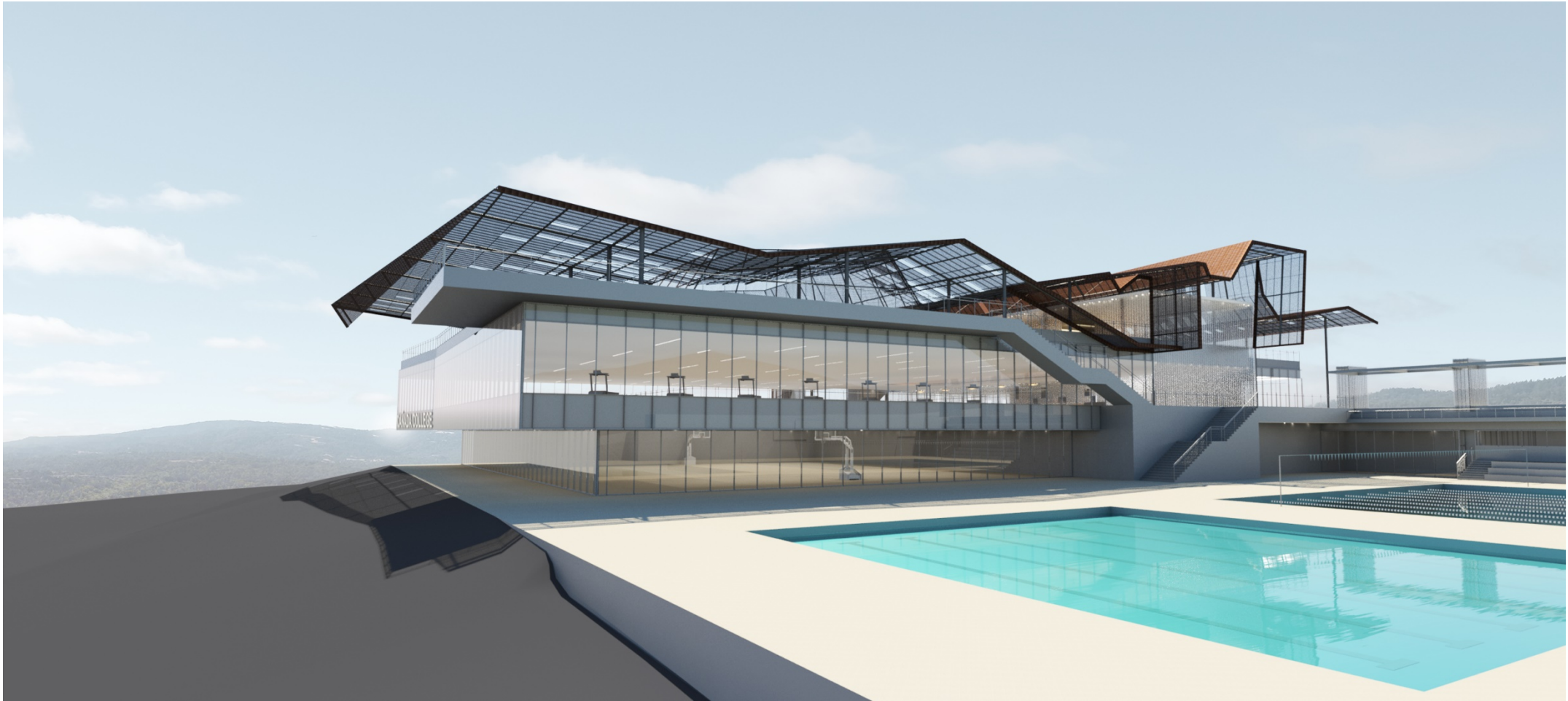




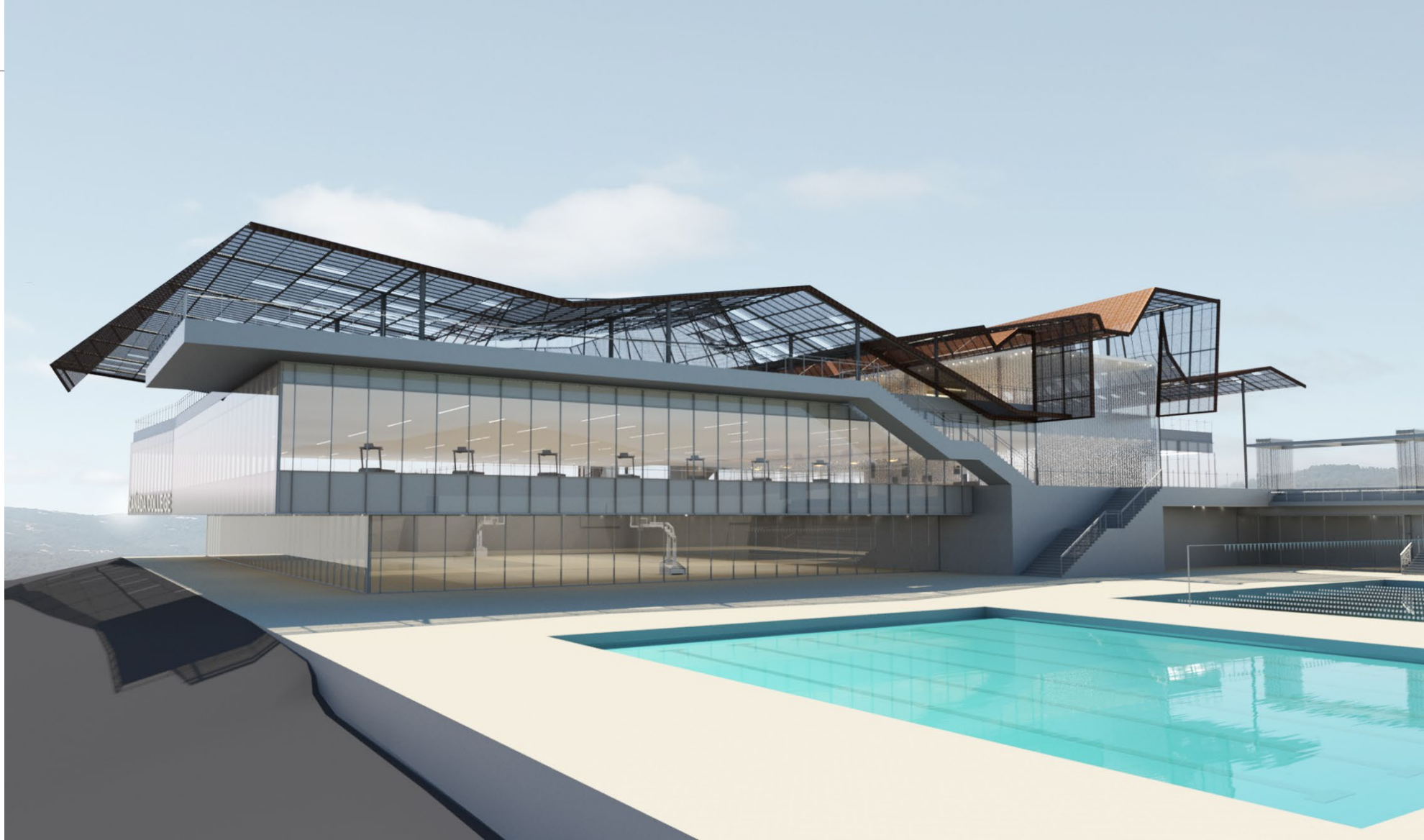










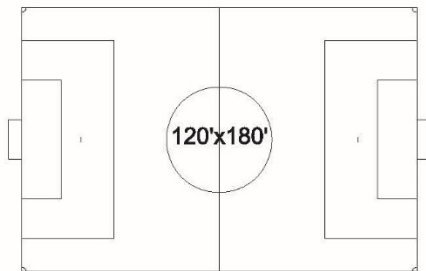
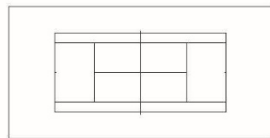
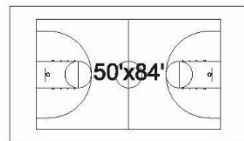
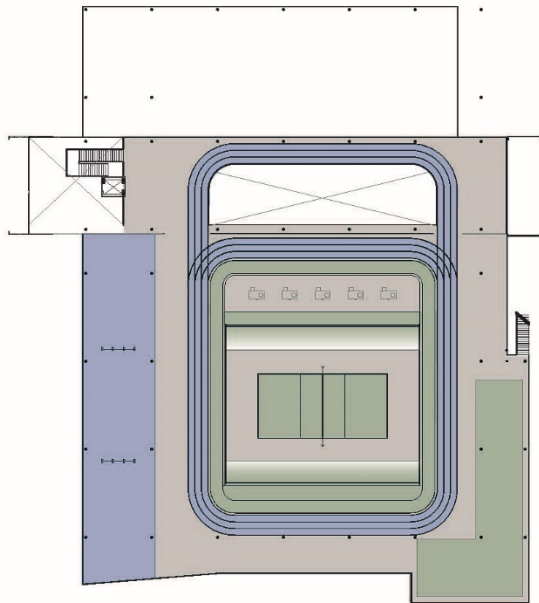












ROOF PLAN: SPORTS  
COURTS / FIELD DIAGRAM

0 60 120





































# Outreach and Collaboration





# Stakeholder Consensus Building





# PROCESS

**Information Gathering – Reports/Past Programming Documents/Space Planning Concepts/Current Building Plans.**



**Under the direction of SMCCD and Canada Leadership, identify and reach out to stakeholders critical to Participatory Governance Process**





**Initiate Interviews with SMCCD and Canada Leadership/Coaching Staff, Instructors and Student Representatives to confirm needs/issues/goals**

**Previously established for following activities:  
Kinesiology, Athletics, Dance and Physical Education**



**Record Needs/Issues/Goals and apply determine  
Priority.**



**Presentation to leadership results of interviews and priority ranking.**



**Prepare a memo report on findings.**





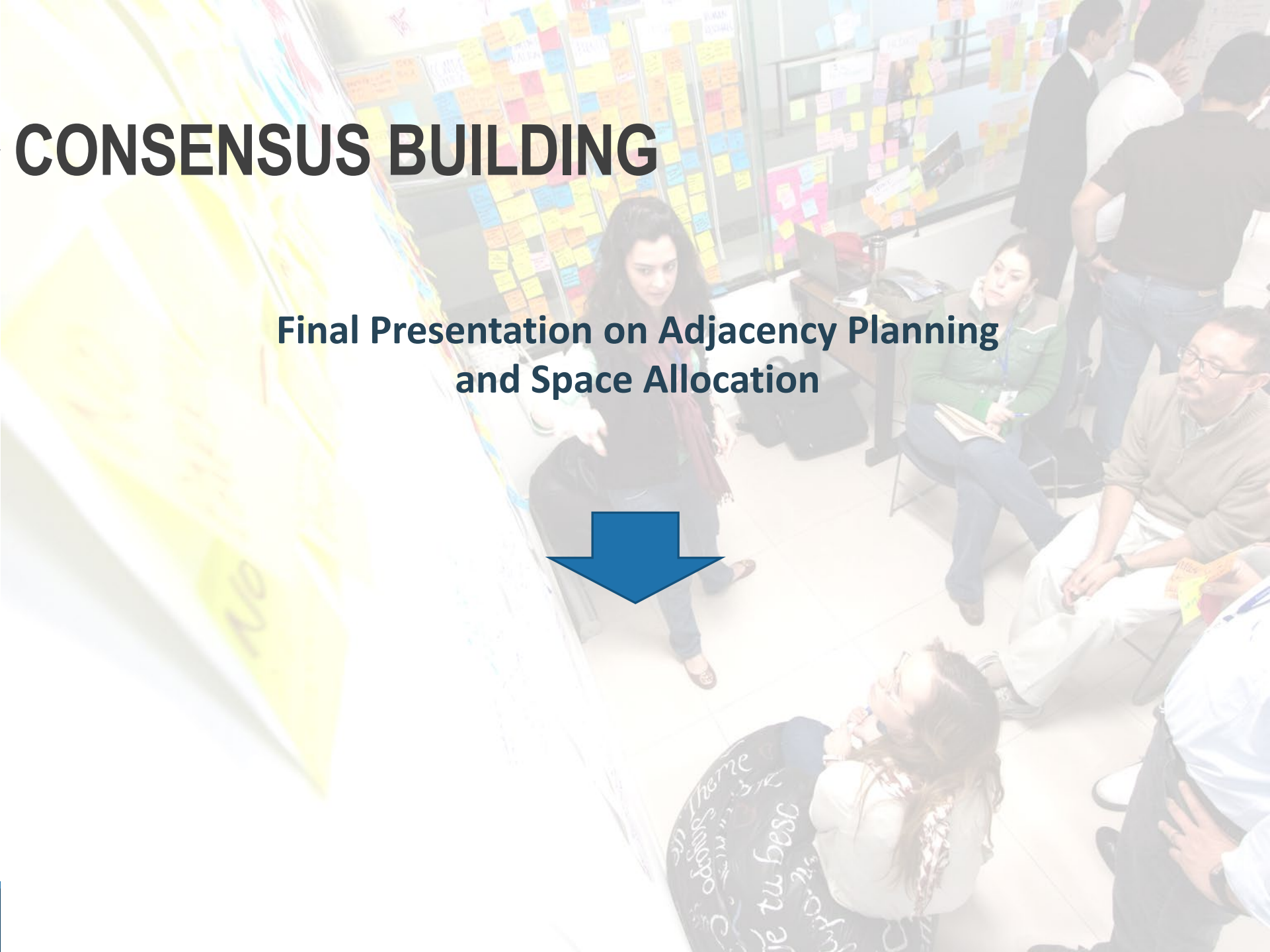
A group of people are gathered in a meeting room. The walls are covered with numerous colorful sticky notes, suggesting a brainstorming or collaborative session. Several people are seated on the floor, while others stand. The room has a casual, creative atmosphere.

**identify potential “space partnering” opportunities, greater separation requirements, adjacency communication pluses and minus, potential resource sharing.**

**Prepare a memo report on findings**

# CONSENSUS BUILDING

**Final Presentation on Adjacency Planning  
and Space Allocation**

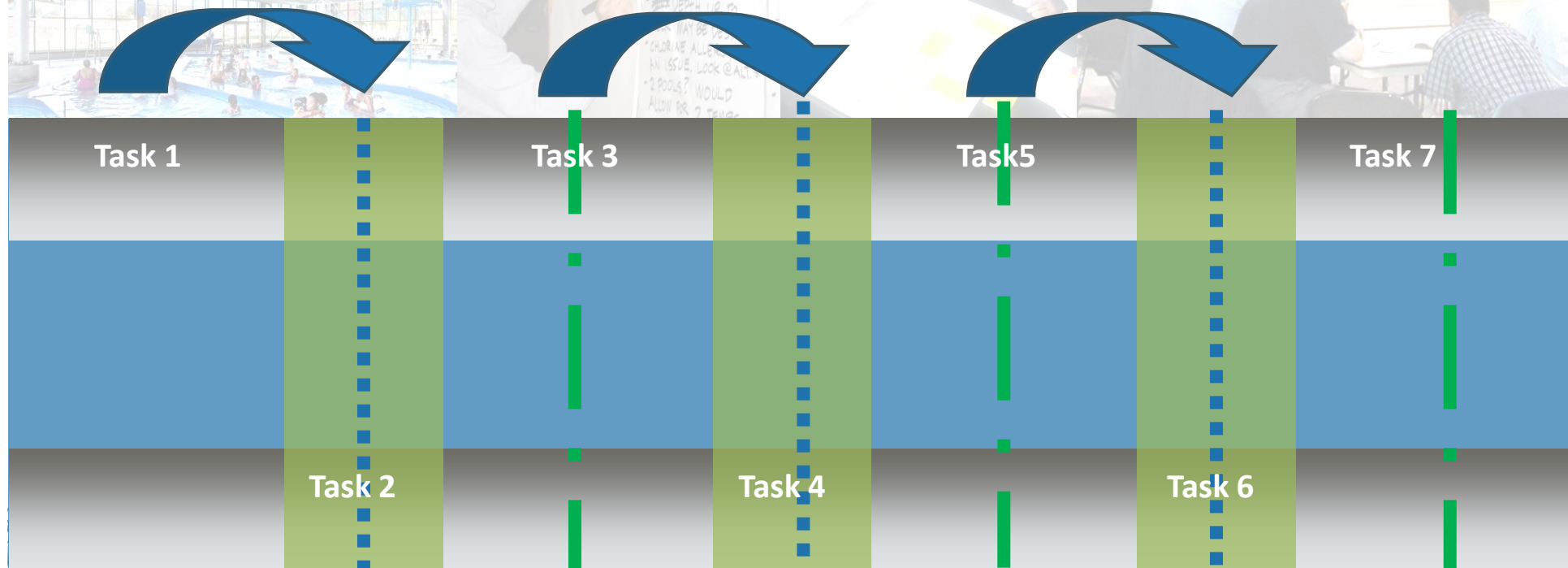


START POINT

INPUT

REVIEW

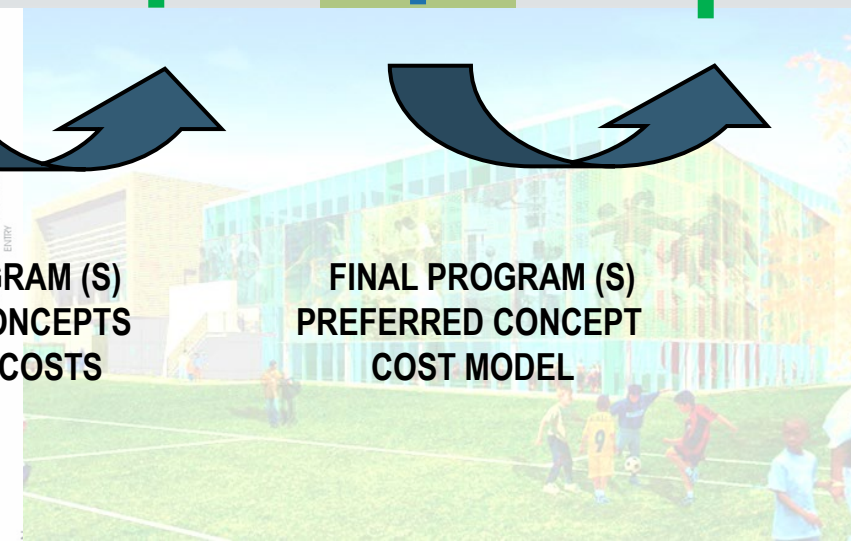
CONFIRMATION



ALTERNATIVE PROGRAMS  
SITE OPORTUNITIES  
AQUATICS GOALS

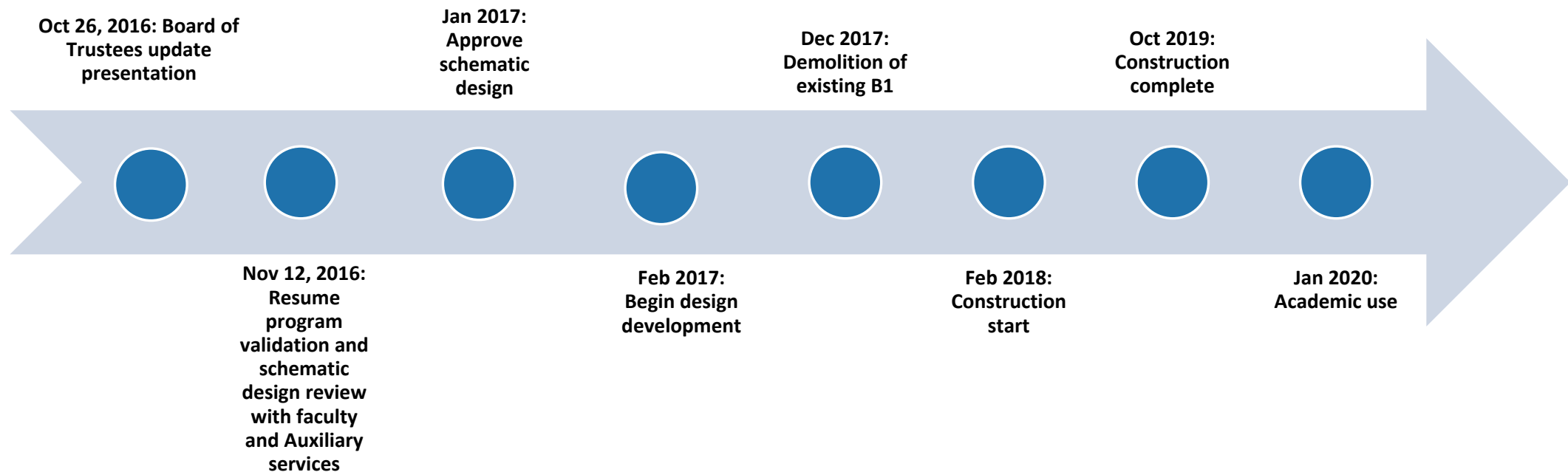


REFINED PROGRAM (S)  
ALTERNATIVE CONCEPTS  
CONCEPTUAL COSTS



FINAL PROGRAM (S)  
PREFERRED CONCEPT  
COST MODEL

# Where we're going- Preliminary project schedule





# Where We're Going

- Team houses
- Swing Space Planning
  - On-site
  - CSM: Off-site





---

# Questions